

U.S. ARMY TM 5-4320-304-24P
U.S. MARINE CORPS TM 08922A-24P/2

TECHNICAL MANUAL

UNIT, INTERMEDIATE DIRECT SUPPORT AND
INTERMEDIATE GENERAL SUPPORT MAINTENANCE
REPAIR PARTS AND SPECIAL TOOLS LIST

FOR

**PUMP UNIT, CENTRIFUGAL,
SELF-PRIMING, 125 GPM,
CLASS 3, DIESEL DRIVEN
NSN 4320-01-190-0417**

Approved for public release. Distribution is unlimited.

**HEADQUARTERS, DEPARTMENT OF THE ARMY
AND HEADQUARTERS, US. MARINE CORPS
30 NOVEMBER 1987**

TECHNICAL MANUAL
No. 5-4320-304-24P
No. 08922A-24P/2

HEADQUARTERS, DEPARTMENT OF THE ARMY AND
HEADQUARTERS, U.S. MARINE CORPS
WASHINGTON, D.C., 30 November 1987

Unit, Intermediate Direct Support and
Intermediate General Support Maintenance Manual

for

PUMP UNIT, CENTRIFUGAL, SELF-PRIMING, 125 GPM,
CLASS3, DIESEL-DRIVEN
NSN 4320-01-190-0417

Current as of 29 September 1987

Approved for public release. Distribution is unlimited.

REPORTING ERRORS AND RECOMMENDING IMPROVEMENTS

You can help improve this manual. If you find any mistakes or if you know of a way to improve the procedures, please let us know. Mail your letter, DA Form 2028 (Recommended Changes to Publications and Blank Forms), or DA Form 2028-2 located in back of this manual directly to: Commander, U.S. Army Troop Support Command, ATTN: AMSTR-MCTS, 4300 Goodfellow Boulevard, St. Louis, MO 63120-1798. A reply will be furnished to you. USMC users will submit Form NAVMC10772 to CG MCLB (Code 850),

TABLE OF CONTENTS

	Page	Illus Figure
Section I. INTRODUCTION	1	
Section II. REPAIR PARTS LIST.....	1-1	
Group 00 Centrifugal Pump Unit.....	1-1	1
Group 01 Pump Assembly.....	2-1	2
Group 02 Pump Case Assembly.....	3-1	3
Group 03 Air Filter Assembly.....	4-1	4
Air Cleaner Assembly.....	5-1	5
Air Cleaner.....	6-1	6
Group 04 Engine Assembly	7-1	7
Group 05 Fuel System.....	8-1	8
Fuel Lift Pump	9-1	9
Injection System.....	10-1	10
Group 06 Exhaust System	11-1	11
Group 07 Crank Assembly.....	12-1	12
Group 08 Throttle.....	13-1	13
Group 09 Cylinder Head and Cylinder Assembly		
Cowling and Covers.....	14-1	14
Cylinder Head and Push Rods	15-1	15
Cylinder Head and Valve Assembly	16-1	16
Cylinder and Piston.....	17-1	17

TABLE OF CONTENTS (Continued)

Group 10	Crankcase Assembly		
	Connecting Rod.....	18-1	18
	Timing Cover and Camshaft.	19-1	19
	Governor	20-1	20
	Flywheel and Oil Seal.....	21-1	21
	Crankshaft.....	22-1	22
	Crankcase.....	23-1	23
Group 11	Frame Assembly.....	24-1	24
Group 12	Bulk.....	Bulk-1	
Section III.	SPECIAL TOOLS LIST		
	Special Tools	25-1	25
Section IV.	CROSS-REFERENCE INDEXES.....	I-1	
	National Stock Number Index	I-1	
	Part Number Index	I-3	
	Figure and Item Number Index.	I-11	

UNIT, INTERMEDIATE DIRECT SUPPORT AND
INTERMEDIATE GENERAL SUPPORT MAINTENANCE
REPAIR PARTS AND SPECIAL TOOLS LIST

SECTION I. INTRODUCTION

1. SCOPE. This RPSTL lists and authorizes spares and repair parts; special tools; special test, measurement, and diagnostic equipment (TMDE); and other special support equipment required for performance of Unit, Intermediate Direct Support and Intermediate General Support Maintenance of the Centrifugal Pump Unit. It authorizes the requisitioning, issue, and disposition of spares, repair parts and special tools as indicated by the source, maintenance and recoverability (SMR) codes.

2. GENERAL. In addition to this section, Introduction, this Repair Parts and Special Tools List is divided into the following sections:

a. Section II. Repair Parts List. A list of spares and repair parts authorized by this RPSTL for use in the performance of maintenance. The list also includes parts which must be removed for replacement of the authorized parts. Parts lists are composed of functional groups in ascending alphanumeric sequence, with the parts in each group listed in ascending figure and item number sequence. Bulk materials are listed in item name sequence. Repair parts kits are listed separately in their own functional group within Section II. Repair parts for repairable special tools are also listed in this section. Items listed are shown on the associated illustration(s)/figure(s).

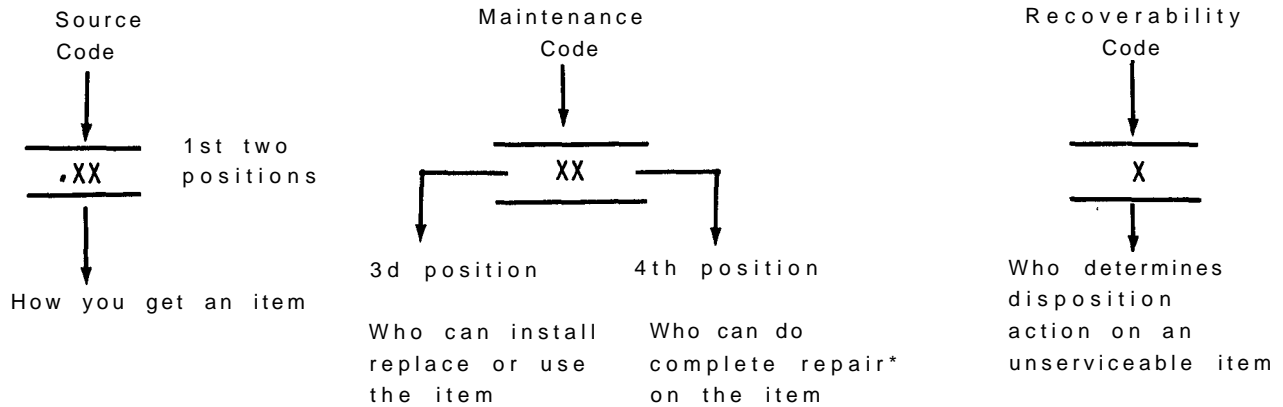
b. Section III. Special Tools List. A list of special tools, special TMDE, and other special support equipment authorized by this RPSTL (as indicated by Basis of Issue (BOI) information in DESCRIPTION AND USABLE ON CODE column) for the performance of maintenance.

c. Section IV. Cross-references Indexes. A list, in National Item Identification Number (NIIN) sequence, of all National stock numbered items appearing in the listing, followed by a list in alphanumeric sequence of all part numbers appearing in the listings. National stock numbers and part numbers are cross-referenced to each illustration figure and item number appearance. The figure and item number index lists figure and item number in alphanumeric sequence and cross-references NSN, FSCM and part number.

3. EXPLANATION OF COLUMNS (SECTIONS II AND III).

a. ITEM NO. (Column (1)). Indicates the number used to identify items called out in the illustration.

b. SMR Code (Column (2)). The Source, Maintenance, and Recoverability (SMR) code is a 5-position code containing supply/requisitioning information, maintenance category authorization criteria, and disposition instruction, as shown in the following breakout:



*Complete Repair: Maintenance capacity, capability, and authority to perform all corrective maintenance tasks of the "Repair" function in a use/user environment in order to restore serviceability to a failed item.

(1) **Source Code.** The source code tells you how to get an item needed for maintenance, repair, or overhaul of an end item/equipment. Explanations of source codes follows:

Code	Explanation
PA PB PC** PD PE PF PG	Stocked items; use the applicable NSN to request/requisition items with these source codes. They are authorized to the category indicated by the code entered in the 3d position of the SMR code. **NOTE: Items coded PC are subject to deterioration.
KD KF KB	Items with these codes are not to be requested/requisitioned individually. They are part of a kit which is authorized to the maintenance category indicated in the 3d position of the SMR code. The complete kit must be requisitioned and applied.
MO--(Made at org. AVUM Level MF--(Made at DS/ AVUM Level MH--(Made at GS Level) ML--Made at Specialized Repair Activity (SRA) MD--(Made at Depot)	Explanation Items with these codes are not to be requested/requisitioned individually. They must be made from bulk material which is identified by the part number in the DESCRIPTION and USABLE ON CODE (UOC) column and listed in the Bulk Material group of the repair parts list in this RPSTL. If the item is authorized to you by the 3d position code of the SMR code, but the source code indicates it is made at a higher level, order the item from the higher level of maintenance.

AO--(Assembled by org/AVUM Level) AF--(Assembled by DS/AVIM Level) AH--(Assembled by GS Category) AL--(Assembled by SRA) AD--(Assembled by Depot)
--

Explanation

Items with these codes are not to be requested/requisitioned individually. The parts that make up the assembled item must be requisitioned or fabricated and assembled at the level of maintenance indicated by the source code. If the 3d position code of the SMR code authorizes you to replace the item, but the source code indicates the items are assembled at a higher level, order the item from the higher level of maintenance.

Explanation

C o d e

- XA--Do not requisition an "XA"-coded item. Order its next higher assembly. (Also, refer to the NOTE below.)
- XB--If an "XB" item is not available from salvage, order it using the FSCM and part number given.
- XC--Installation drawing, diagram, instruction sheet, field service drawing, that is identified by manufacturer's part number.
- XD--Item is not stocked. Order an "XD"-coded item through normal supply channels using the FSCM and part number given, if no NSN is available.

NOTE

Cannibalization or controlled exchange, when authorized, may be used as a source of supply for items with the above source codes, except for those source coded "XA" or those aircraft support items restricted by requirements of AR 750-1.

(2) **Maintenance Code.** Maintenance codes tells you the level(s) of maintenance authorized to USE and REPAIR support items. The maintenance codes are entered in the third and fourth positions of the SMR code as follows:

- (a) The maintenance code entered in the third position tells you the lowest maintenance level authorized to remove, replace, and use an item. The maintenance code entered in the third position will indicate authorization to one of the following levels of maintenance.

Code	Application/Explanation
C	--Crew or operator maintenance done within organizational or aviation unit maintenance.
O	--Organizational or aviation unit category can remove, replace, and use the item.
F	--Direct support or aviation intermediate level can remove, replace, and use the item.

H --General support level can remove, replace, and use the item.

L --Specialized repair activity can remove, replace, and use the item.

D --Depot level can remove, replace, and use the item.

(b) The maintenance code entered in the fourth position tells whether or not the item is to be repaired and identifies the lowest maintenance level with the capability to do complete repair (i.e., perform all authorized repair functions.) NOTE: Some limited repair may be done on the item at a lower level of maintenance, if authorized by the Maintenance Allocation Chart (MAC) and SMR codes. This position will contain one of the following maintenance codes.

Code	Application/Explanation
0	--Organizational or (aviation unit) is the lowest level that can do complete repair of the item.
F	--Direct support or aviation intermediate is the lowest level that can do complete repair of the item.
H	--General Support is the lowest level that can do complete repair of the item.
L	--Specialized repair activity is the lowest level that can do complete repair of the item.
D	--Depot is the lowest level that can do complete repair of the item.
Z	--Nonreparable. No repair is authorized.
B	--No repair is authorized. (No parts or special tools are authorized for the maintenance of a "B" coded item). However, the item may be reconditioned by adjusting, lubricating, etc., at the user level.

(3) Recoverability Code. Recoverability codes are assigned to items to indicate the disposition action on unserviceable items. The recoverability code is entered in the fifth position of the SMR Code as follows:

Recoverability Codes	Application/Explanation
Z	--Nonreparable item. When unserviceable, condemn and dispose of the item at the level of maintenance shown in 3d position of SMR Code.

Recoverability Codes	Application/Explanation
O	--Reparable item. When uneconomically reparable, condemn and dispose of the item at organizational or aviation unit level.
F	--Reparable item. When uneconomically reparable, condemn and dispose of the item at the direct support or aviation intermediate level.
H	--Reparable item. When uneconomically reparable, condemn and dispose of the item at the general support-level.
D	--Reparable item. When beyond lower level repair capability, return to depot. Condemnation and disposal of item not authorized below depot level.
L	--Reparable item. Condemnation and disposal not authorized below specialized repair activity (SRA).
A	--Item requires special handling or condemnation procedures because of specific reasons (e.g., precious metal content, high dollar value, critical material, or hazardous material). Refer to appropriate manuals/directives for specific instructions.

c. FSCM (Column (3)). The Federal Supply Code for Manufacturer (FSCM) is a 5-digit numeric code which is used to identify the manufacturer, distributor, or Government agency, etc., that supplies the item.

d. PART NUMBER (Column (4)). Indicates the primary number used by the manufacturer, (individual, company, firm, corporation, or Government activity), which controls the design and characteristics of the item by means of its engineering drawings, specifications standards, and inspection requirements to identify an item or range of items.

NOTE

When you use an NSN to requisition an item, the item you receive may have a different part number from the part ordered.

e. DESCRIPTION AND USABLE ON CODE (UOC) (Column (5)) . This column includes the following information:

- (1) The Federal item name and, when required a minimum description to identify the item.
- (2) The physical security classification of the item is indicated by the parenthetical entry, e.g., Phy Sec C1 - Confidential, Phy Sec C1 (S) - Secret, Phy Sec C1 (T) - Top Secret.

- (3) Items that are included in kits and sets are listed below the name of the kit or set.
- (4) Spare/repair parts that make up an assembled item are listed immediately following the assembled item line entry.
- (5) Part numbers for bulk materials are referenced in this column in the line item entry for the item to be manufactured/fabricated.
- (6) When the item is not used with all serial numbers of the same model, the effective serial numbers are shown on the last line(s) of the description (before UOC).
- (7) The usable on code, when applicable (see paragraph 5, Special Information).
- (8) In the Special Tools List section, the basis of issue (BOI) appears as the last line(s) in the entry for each special tool, special TMDE, and other special support equipment. When density of equipments supported exceeds density spread indicated in the basis of issue, the total authorization is increased proportionately.
- (9) The statement "END OF FIGURE" appears just below the last item description in Column 5 for a given figure in both Section II and Section III.
- (10) The indenture, shown as dots appearing before the repair part, indicates that the item is a repair part of the next higher assembly.

f. QTY (Column (6)). The QTY (quantity per figure column) indicates the quantity of the item used in the breakout shown on the illustration figure, which is prepared for a functional group, subfunctional group, or an assembly. A "V" appearing in this column in lieu of a quantity indicates that the quantity is variable and may vary from application to application.

4. EXPLANATION OF COLUMNS (SECTION IV).

a. NATIONAL STOCK NUMBER (NSN) INDEX.

- (1) **STOCK NUMBER column.** This column lists the NSN by National item identification number

(NIIN) sequence. The NIIN consists of the last nine digits of the
NSN, i.e. $(5305-\overbrace{01-574-1467}^{\text{NSN}})$.
NIIN

When using this column to locate an item, ignore the first 4 digits of the NSN. However, the complete NSN should be used when ordering items by stock number.

- (2) **FIG. column.** This column lists the number of the figure where the item is identified/located. The figures are in numerical order in Section II and Section III.

- (3) **ITEM column.** The item number identifies the item associated with the figure listed in the adjacent FIG. column. This item is also identified by the NSN listed on the same line.

b. PART NUMBER INDEX. Part numbers in this index are listed by part number in ascending alphanumeric sequence (i.e., vertical arrangement of letter and number combination which places the first letter or digit of each group in order A through Z, followed by the numbers 0 through 9 and each following letter or digit in like order).

- (1) **FSCM Column.** The Federal Supply Code for Manufacturer (FSCM) is a 5-digit numeric code used to identify the manufacturer, distributor, or Government agency, etc., that supplies the item.
- (2) **PART NUMBER column.** Indicates the primary number used by the manufacturer (individual, firm, corporation, or Government activity), which controls the design and characteristics of the item by means of its engineering drawings, specifications standards, and inspection requirements to identify an item or range of items.
- (3) **STOCK NUMBER column.** This column lists the NSN for the associated part number and manufacturer identified in the PART NUMBER and FSCM columns to the left.
- (4) **FIG. column.** This column lists the number of the figure where the item is identified/located in Sections II and III.
- (5) **ITEM column.** The item number is that number assigned to the item as it appears in the figure referenced in adjacent figure number column.

c. FIGURE AND ITEM NUMBER INDEX.

- (1) **FIG. column.** This column lists the number of the figure where the item is identified/located in Section II and III.
- (2) **ITEM column.** The item number is that number assigned to the item as it appears in the figure referenced in the adjacent figure number column.
- (3) **STOCK NUMBER column.** This column lists the NSN for the item.
- (4) **FSCM column.** The Federal Supply Code for Manufacturer (FSCM) is a 5-digit numeric code used to identify the manufacturer, distributor, or Government agency, etc., that supplies the item.
- (5) **PART NUMBER column.** Indicates the primary number used by the manufacturer (individual, firm, corporation, or Government activity), which controls the design and characteristics of the item by means of its engineering drawings, specifications standards, and inspection requirements to identify an item or range of items.

5. SPECIAL INFORMATION.

a. **USABLE ON CODE.** The usable on code appears in the lower left corner of the Description column heading. Usable on codes are shown as "UOC:...." in the Description Column (justified-left) on the last line applicable item description/nomenclature. Uncoded items are applicable to all models.

b. **ASSOCIATED PUBLICATIONS.** The publication listed below pertains to the Centrifugal Pump Unit.

Publication	Short Title
TM 5-4320-304-14 TM-08922A-14/1	Pump Unit, Centrifugal

6. HOW TO LOCATE REPAIR PARTS.

a. When National Stock Number or Part Number is NOT Known.

- (1) **First.** Using the table of contents, determine the assembly group or subassembly group to which the item belongs. This is necessary since figures are prepared for assembly groups and subassembly groups, and listings are divided into the same groups.
- (2) **Second.** Find the figure covering the assembly group or subassembly group to which the item belongs.
- (3) **Third.** Identify the item on the figure and note the item number.
- (4) **Fourth.** Refer to the Repair Parts List for the figure to find the part number for the item number noted on the figure.
- (5) **Fifth.** Refer to the Part Number Index to find the NSN, if assigned.

b. When National Stock Number or Part Number is Known:

- (1) **First.** Using the Index of National Stock Numbers and Part Numbers, find the pertinent National Stock Number or Part Number. The NSN index is in National Item Identification Number (NIIN) sequence (see 4a(1)). The part numbers in the Part Number index are listed in ascending alphanumeric sequence (see paragraph 4b). Both indexes cross-reference you to the illustration figure and item number of the item you are looking for.
- (2) **Second.** After finding the figure and item number, verify that the item is the one you are looking for, then locate the item number in the repair parts list for the figure.

7. **ABBREVIATIONS.** Abbreviations used in this manual are listed in MIL-STD-12.

TM 5-4320-304-24P
TM-08922A-24P/2

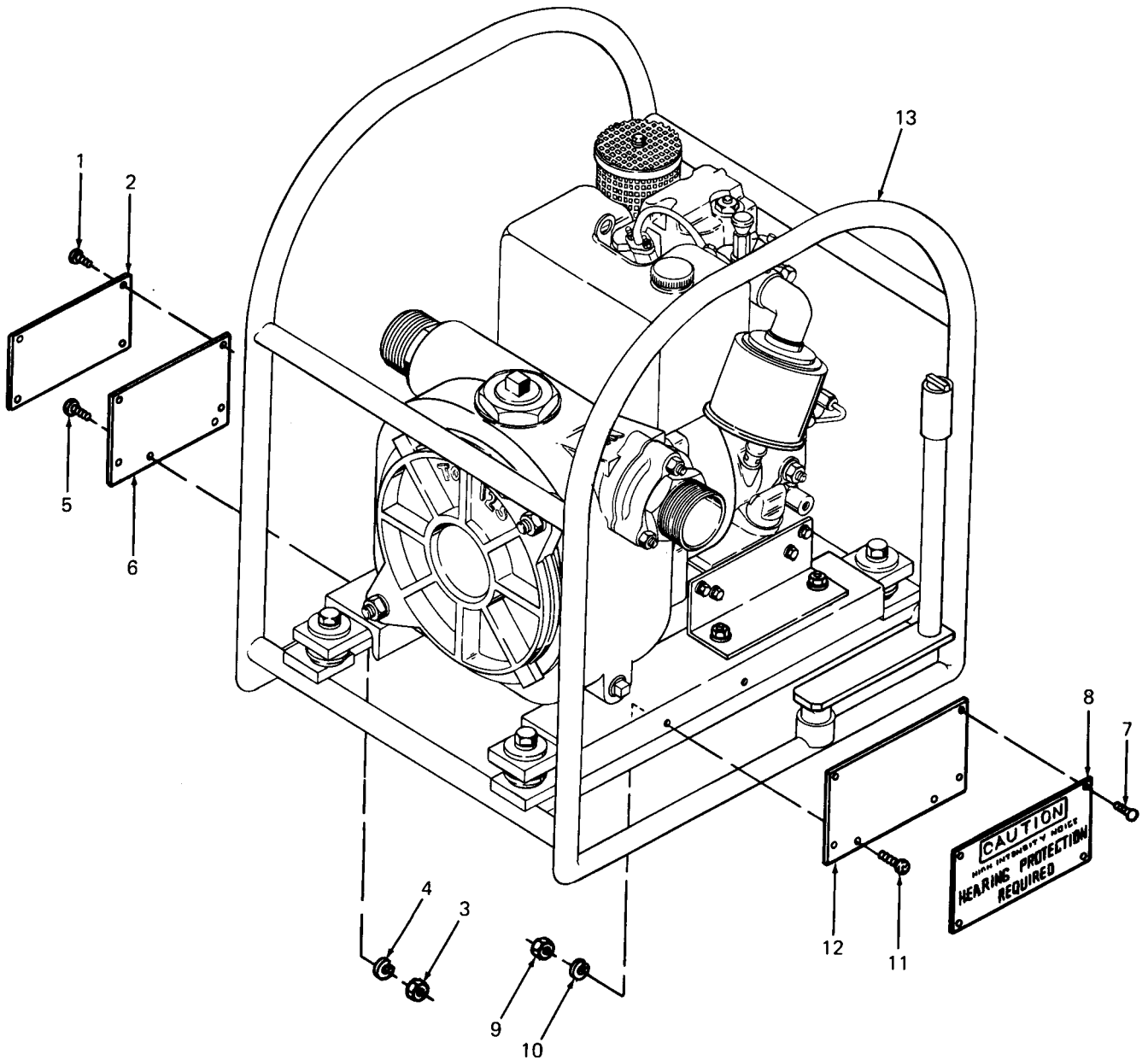


Figure 1. Centrifugal Pump Unit

SECTION II

(1) ITEM NO	(2) CODE	(2) SMR FSCM	(4) PART NUMBER	(5) DESCRIPTION AND USABLE ON CODE (UOC)	(6) QTY
GROUP 00 CENTRIFUGAL PUMP UNIT					
FIG. 1 CENTRIFUGAL PUMP UNIT					
1	XDOZZ	05748	01628	SCREW,DRIVE NO.4X3/16 INCH LONG	4
2	XDOZZ	05748	51454	PLATE,IDENTIFICATIO IDENTIFICATION	1
3	PAOZZ	96906	MS35649-202	NUT,PLAINM,HEXAGON NO.10-24	2
4	PAOZZ	96906	MS35338-43	WASHER,LOCK NO.10	2
5	PAOZZ	96906	MS35206-264	SCREW,MACHINE NO.10-24X5/8 INCH LONG	2
6	XDOZZ	97403	13219E2950	PLATE,MOUNTING	1
7	XDOZZ	05748	01628	SCREW,DRIVE NO.4X3/16 INCH LONG	8
8	XDOZZ	05748	77939	PLATE,CAUTION	2
9	PAOZZ	96906	MS35649-202	NUT,PLAIN,HEXAGON NO.10-24	4
10	PAOZZ	96906	MS35338-43	WASHER,LOCK NO.10	4
11	PAOZZ	96906	MS35206-264	SCREW,MACHINE NO.10-24X5/8 INCH LONG	4
12	XDOZZ	05748	77940	PLATE,MOUNTING	2
13	XAOHH	05748	70895SA	PUMP UNIT ASSEMBLY	1
END OF FIGURE					

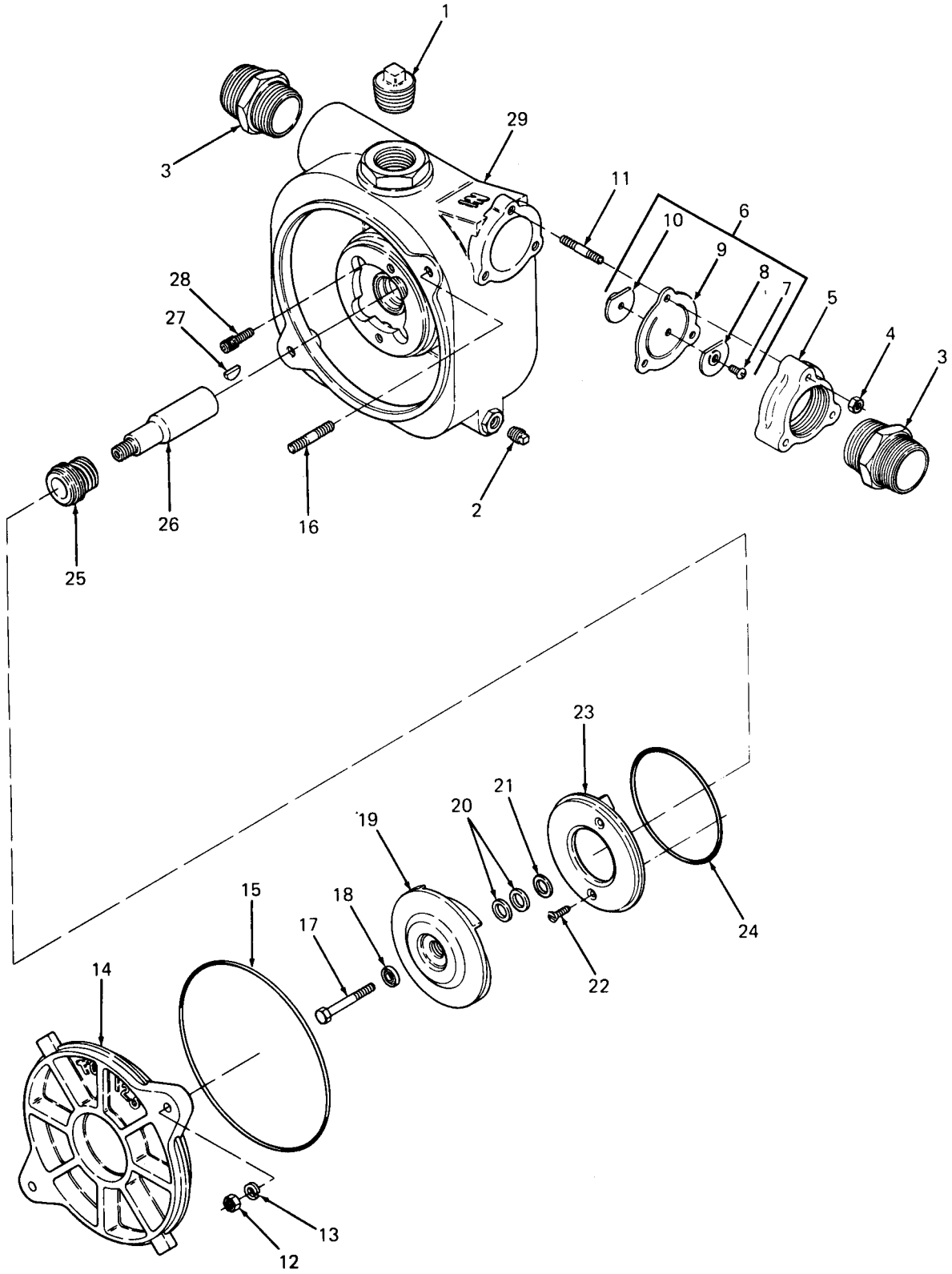


Figure 2. Pump Assembly

SECTION II

(1) ITEM NO	(2) CODE	(4) SMR FSCM	(4) PART NUMBER	(5) DESCRIPTION AND USABLE ON CODE (UOC)	(6) QTY
GROUP 01 PUMP ASSEMBLY					
FIG. 2 PUMP ASSEMBLY					
1	PAOZZ	96906	MS51884-15	.PLUG,PIPE 1-1/2 INCH NPT	1
2	PAOZZ	05748	15000	.PLUG,PIPE 3/8 INCH NPT	1
3	PAOZZ	97403	13218E0479-37	.ADAPTER,STRAIGHT,PI 2 INCH NPT X 2 INCH NPSH	2
4	PAOZZ	96906	MS51968-5	.NUT,PLAIN,HEXAGON 5/16-24	3
5	XDOZZ	97403	13200E8814	.FLANGE,PIPE	1
6	PAOZZ	97403	13200E8810	.FLAPPER,FOOT VALVE ASSEMBLY	1
7	PAOZZ	96906	MS35214-69	..SCREW,MACHINE 1/4-20X1/2 INCH LONG	1
8	XDOZZ	97403	13200E8811	..WEIGHT,CHECK VALVE	1
9	PAOZZ	97403	13200E8813	..GASKET	1
10	XDOZZ	97403	13200E8812	..WEIGHT,CHECK VALVE,	1
11	PAOZZ	96906	MS51864-103-18	.STUD 5/16-18NCX5/16-24UNFX2-1/ 4IN. LG	3
12	PAOZZ	96906	MS51968-14	.NUT,PLAIN,HEXAGON	2
13	PAOZZ	96906	MS27183-18	.WASHER,FLAT 1/2 INCH ID	2
14	XDOZZ	97403	13200E8809	.VOLUTE,PUMP	1
15	PAOZZ	96906	MS29513-273	.PACKING,PREFORMED 1/8X9-3/4X10 PART OF KIT P/N 78678S/A	1
16	PAOZZ	96906	MS51864-106-20	.STUD,PLAIN 1/2-13X1/2-20X2-3/8 INCH LONG	2
17	PAOZZ	96906	MS90726-43	.BOLT,MACHINE 5/16-24X2-3/4 INCH LONG	1
18	KFOZZ	97403	13200E8802	.RETAINER,PACKING 5/16 INCH PART OF KIT P/N 78678S/A	1
19	XDOZZ	97403	13200E8808	.IMPELLER,PUMP,CENTR	1
20	PAOZZ	97403	13200E8807-1	.SHIM 0.010 INCH THICK	2
21	PAOZZ	97403	13200E8807-2	.WASHER,FLAT 0.030 INCH THICK	1
22	PAOZZ	96906	MS35198-70	.SCREW,MACHINE FLAT HD 1/4-20X5/8 IN. LG	2
23	XDOZZ	97403	13200E8815	.PLATE,WEAR,PUMP	1
24	KFOZZ	96906	MS29513-253	.PACKING,PREFORMED 1/8X5-3/8X5-5/8 PART OF KIT P/N 78678S/A	1
25	KFOZZ	97403	13200E8806	.SEAL,SHAFT PART OF KIT P/N 78678S/A	1
26	XDOZZ	97403	13200E8804	.SHAFT,SHOULDERED	1
27	PAOZZ	96906	MS35756-34	.KEY,WOODRUFF 3/16X5/8 INCH LONG	1
28	KFOZZ	97403	13200E8861	.SCREW,CAP,SOCKET HE 5/16-24X7/8 INCH LONG PART OF KIT P/N 78678S/A	4
29	AOOFF	05748	29282SA	.PUMP CASE ASSEMBLY	1
	PAOZZ	05748	78678S/A	.KIT,REPAIR PUMP	1
				PACKING,PREFORMED (1) 2-15	
				PACKING,PREFORMED (1) 2-24	
				RETAINER,PACKING (1) 2-18	
				SCREW,CAP,SOCKET HE(4) 2-28	
				SEAL,SHAFT (1) 2-25	

END OF FIGURE

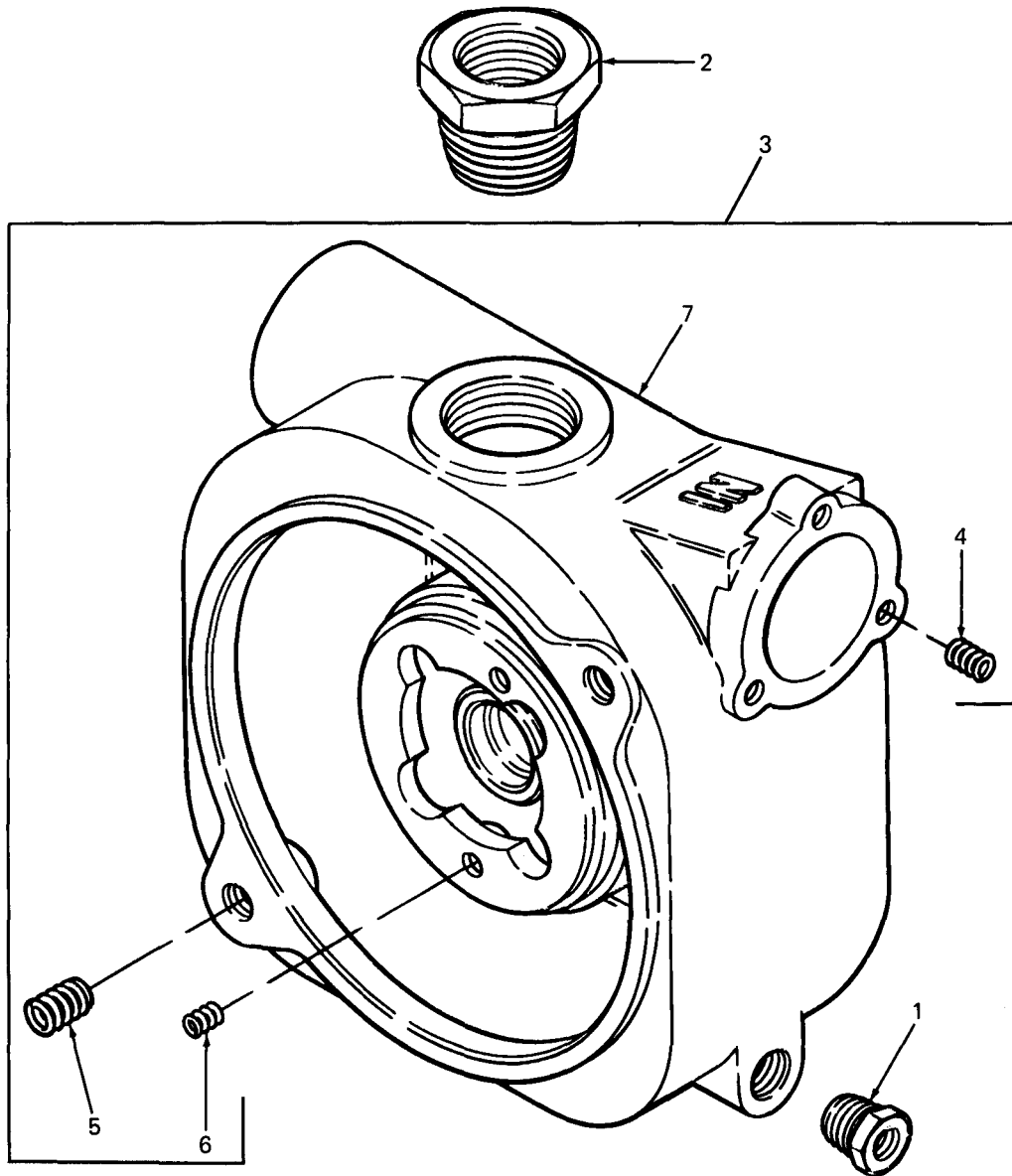


Figure 3. Pump Case Assembly

SECTION II

(1) ITEM NO	(2) CODE	(2) SMR FSCM	(4) PART NUMBER	(5) DESCRIPTION AND USABLE ON CODE (UOC)	(6) QTY
GROUP 02 PUMP CASE ASSEMBLY					
FIG. 3 PUMP CASE ASSEMBLY					
1	PAOZZ	96906	MS51887-7C	..BUSHING,PIPE	1
2	PAOZZ	97403	13218E0468-227	..BUSHING 2NPTX1-1/2NPT	1
3	XDOFZ	97403	13200E8803	..BODY,PUMP PUMP AND HELICOIL	1
				...INSERT	
4	PAFZZ	96906	MS122122	...INSERT,SCREW THREAD 5/16-18	3
5	PAFZZ	96906	MS122125	...INSERT,SCREW THR 1/2-13 X 3/4	2
6	PAFZZ	96906	MS122121	...INSERT,SCREW THREAD 1/4-20 X 3/8	2
7	XAFZZ	05748	29593	...CASE,PUMP	1
END OF FIGURE					

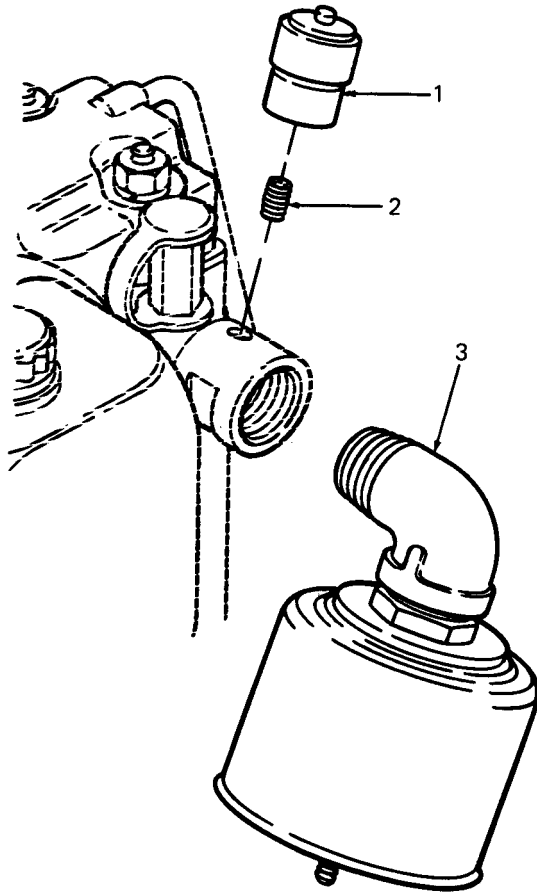


Figure 4. Air Filter Assembly

SECTION II

(1) ITEM NO	(2) SMR CODE	(4) PART FSCM NUMBER	(5) DESCRIPTION AND USABLE ON CODE (UOC)	(6) QTY
			GROUP 03 AIR FILTER ASSEMBLY	
			FIG. 4 AIR FILTER ASSEMBLY	
1	PAOZZ	18265	.INDICATOR, AIR RESTRICTION	1
2	XDOZZ	05748	.NIPPLE,CLOSE 1/8 NPT X 3/4 IN LG	1
3	AOOOO	05748	.AIR CLEANER ASSEMBLY	1
			END OF FIGURE	

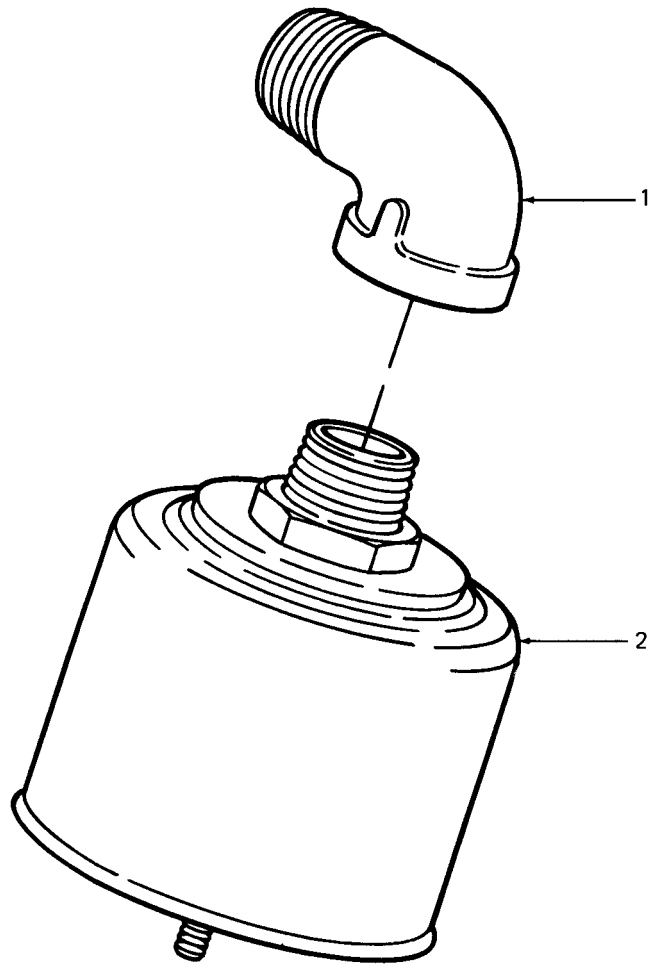


Figure 5. Air Cleaner Assembly

SECTION II

(1) ITEM NO	(2) SMR FSCM CODE	(4) PART NUMBER	(5) DESCRIPTION AND USABLE ON CODE (UOC)	(6) QTY
			GROUP 03 AIR FILTER ASSEMBLYU	
			FIG. 5 AIR CLEANER ASSEMBLY	
1	XDOZZ 05748	05805	..ELBOW, STREET 1-1/4 IN NPT	1
2	XDOZZ 00736	204-302	..CLEANER, AIR	1
			END OF FIGURE	

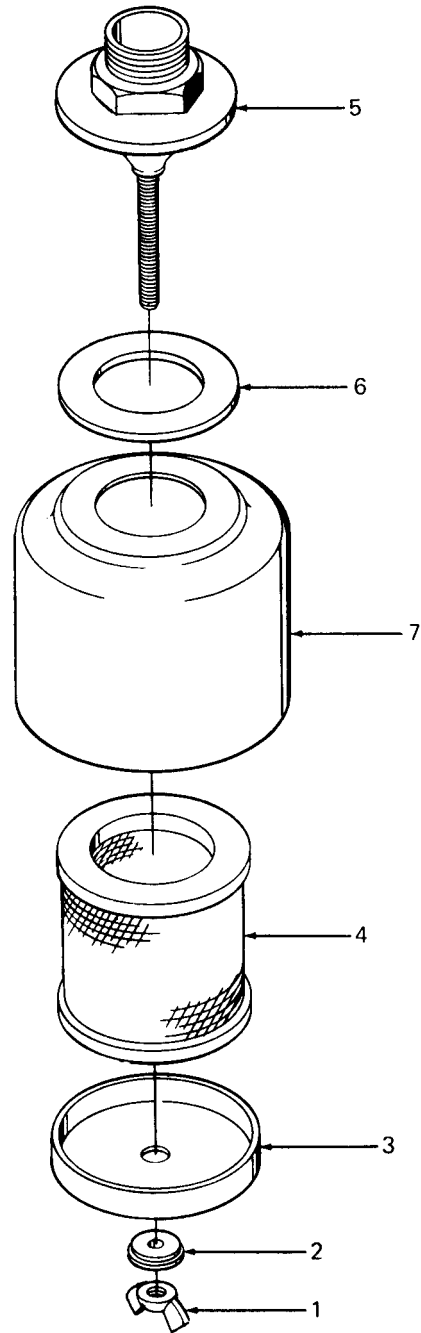


Figure 6. Air Cleaner

SECTION II

(1) ITEM NO	(2) SMR CODE	(4) PART FSCM NUMBER	(5) DESCRIPTION AND USABLE ON CODE (UOC)	(6) QTY
			GROUP 03 AIR FILTER ASSEMBLY	
			FIG. 6 AIR CLEANER	
1	PAOZZ	00736 20515	...NUT .375-16	1
2	PAOZZ	00736 22852	...WASHER, SEALING	1
3	XDOZZ	00736 1NB-001	...TOP	1
4	PAOBZ	00736 1DM-007	...FILTER, AIR	1
5	XDOZZ	00736 12PGJW/STEM	...CONNECTOR, BASE	1
6	PAOZZ	00736 12B-006	...GASKET	1
7	XDOZZ	00736 204302-800	...HOOD, RAIN	1
			END OF FIGURE	

TM 5-4320-304-24P
TM-08922A-24P/2

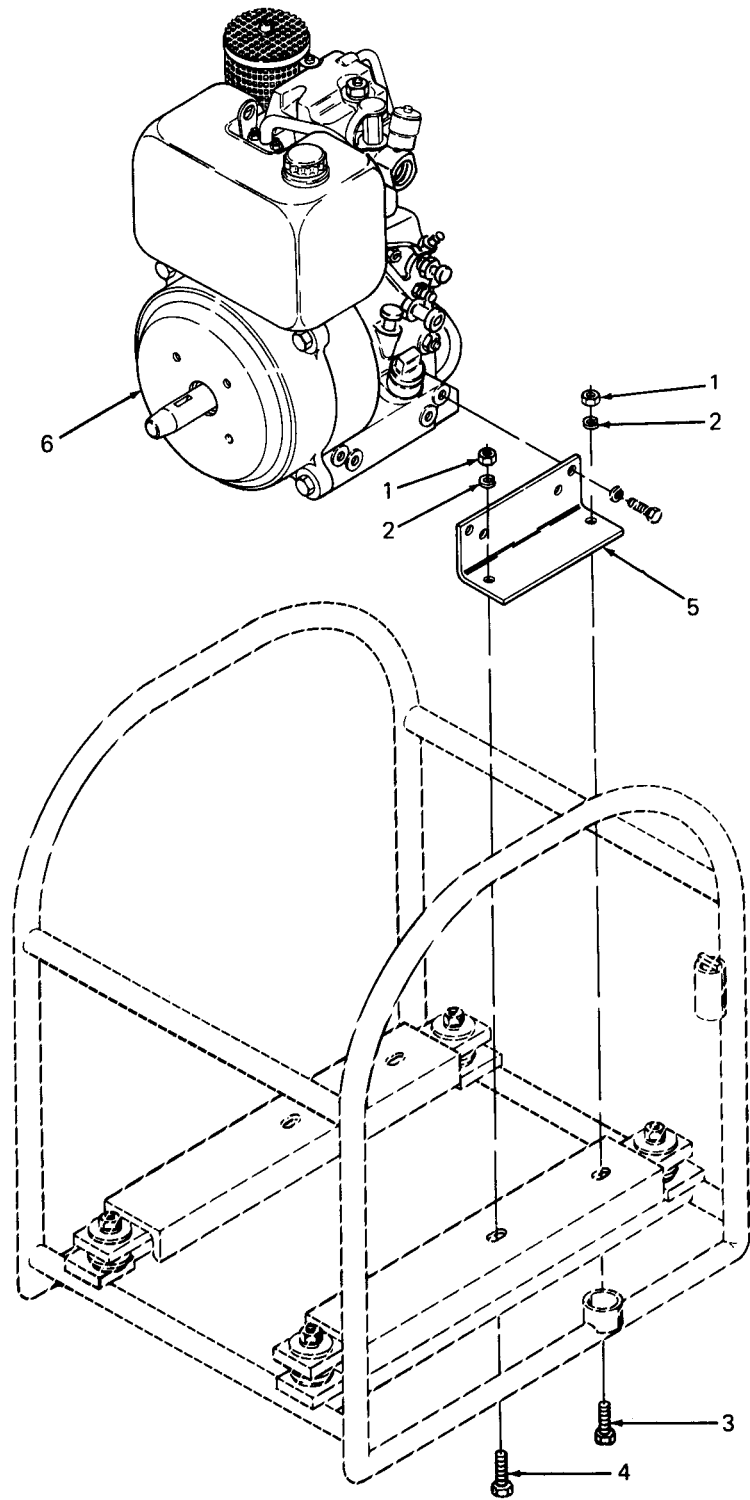


Figure 7. Engine Assembly

SECTION II

(1) ITEM NO	(2) SMR CODE	(4) PART FSCM	(4) PART NUMBER	(5) DESCRIPTION AND USABLE ON CODE (UOC)	(6) QTY
				GROUP 04 ENGINE ASSEMBLY	
				FIG. 7 ENGINE ASSEMBLY	
1	PAFZZ	96906	MS51967-8	.NUT,PLAIN,HEXAGON 3/8-16	4
2	PAFZZ	96906	MS35338-46	.WASHER,LOCK 3/8 IN	4
3	PAOZZ	96906	MS90728-64	.SCREW,CAP,HEXAGON H 3/8-16X1-1/2 INCH LONG	2
4	PAFZZ	96906	MS90725-60	.SCREW,CAP,HEXAGON H 3/8-16X1 IN LG	4
5	XDOZZ	05748	72028	.BRACKET,ENGINE	2
6	PBFHH	61080	E673LHK-216	.ENGINE	1
				END OF FIGURE	

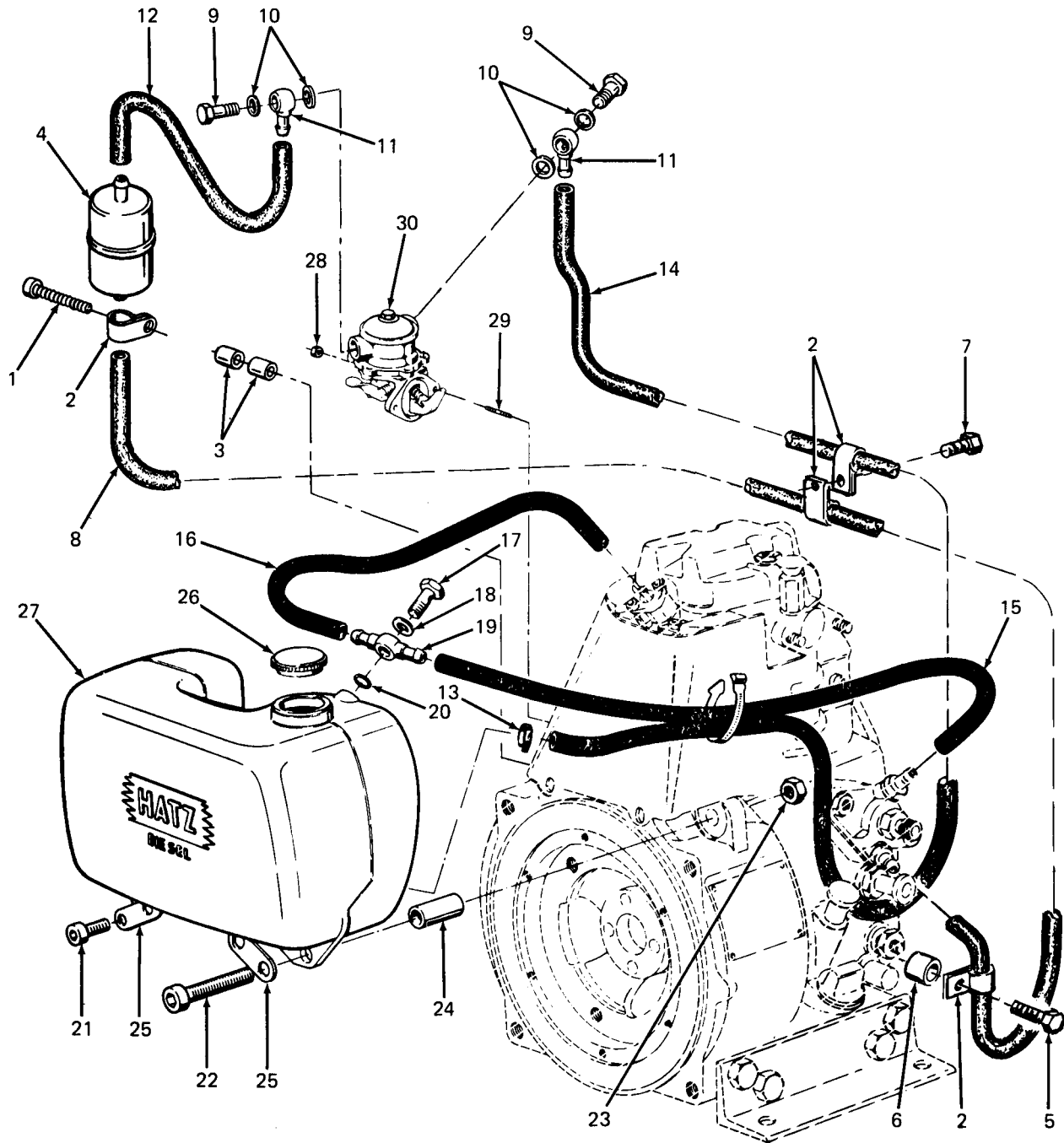


Figure 8. Fuel System

SECTION II

(1) ITEM NO	(2) CODE	(4) SMR FSCM	(4) PART NUMBER	(5) DESCRIPTION AND USABLE ON CODE (UOC)	(6) QTY
GROUP 05 FUEL SYSTEM					
FIG. 8 FUEL SYSTEM					
1	PAOZZ	61080	500 527 00	..SCREW,HEX M8X50	1
2	PAOZZ	61080	031 655 00	..CLIP,PIPE	4
3	PAOZZ	61080	035 206 00	..SPACER 9X14X20	2
4	PAOZZ	61080	400 894 01	..FILTER,FUEL	1
5	PAOZZ	61080	501 731 00	..SCREW,HEX M8X10 DIN 912-8.8ZN	1
6	PAOZZ	61080	032 929 00	..SPACER,SLEEVE	1
7	PAOZZ	61080	501 339 00	..SCREW,HEX M8X12	1
8	MOOZZ	61080	035 256 00	..HOSE,FUEL 400MM LG,CUT FROM BULK P/N 801-4 FSCM 87373	1
9	XDOZZ	61080	500 064 00	..BOLT,BANJO	2
10	PAOZZ	61080	500 012 00	..GASKET	4
11	XDOZZ	61080	500 159 00	..PIECE,RING	2
12	MOOZZ	61080	034 931 00	..HOSE,FUEL 60MM LG,CUT FROM BULK P/N 801-4 FSCM 87373	1
13	PAOZZ	61080	400 373 00	..CLAMP	1
14	MOOZZ	61080	036 742 00	..HOSE,FUEL 55 MM LG,CUT FROM BULK P/N 801-4 FSCM 87373	1
15	MOOZZ	61080	034 936 00	..HOSE,FUEL 330MM LG,CUT FROM BULK P/N 801-4 FSCM 87373	1
16	MOOZZ	61080	034 933 00	..HOSE,FUEL 140MM LG,CUT FROM BULK P/N 801-4 FSCM 87373	1
17	XDOZZ	61080	501 697 00	..BOLT,BANJO	1
18	PAOZZ	61080	500 624 00	..WASHER,SEALING	1
19	XDOZZ	61080	400 933 00	..PIECE,DOUBLE RING	1
20	PAOZZ	61080	501 583 00	..WASHER 10.5 DIN	1
21	XDOZZ	61080	501 715 00	..SCREW,ALLEN M8X25	2
22	XDOZZ	61080	501 716 00	..SCREW,ALLEN M8X65	2
23	XDOZZ	61080	400 284 00	..NUT,HEX M8	2
24	XDOZZ	61080	034 930 00	..TUBE,SPACER	2
25	XDOZZ	61080	035 258 00	..SPACER	4
26	PBOZZ	61080	400 326 11	..CAP,FUEL TANK	1
27	XDOZZ	61080	006 913 00	..TANK,FUEL	1
28	PAOZZ	61080	400 283 00	..NUT,SELF-LOCKING,HE M6	2
29	PAOZZ	61080	501 443 00	..STUD M6X15	2
30	PBOFF	61080	501 814 00	..PUMP,LIFT	1

END OF FIGURE

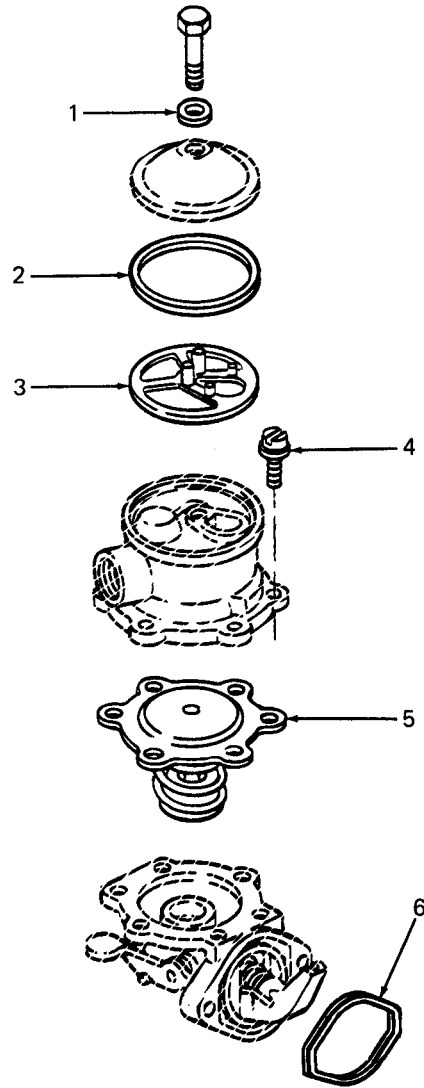


Figure 9. Fuel Lift Pump

SECTION II

(1) ITEM NO	(2) SMR CODE	(4) PART FSCM NUMBER	(5) DESCRIPTION AND USABLE ON CODE (UOC)	(6) QTY
			GROUP 05 FUEL SYSTEM	
			FIG. 9 FUEL LIFT PUMP	
1	PAFZZ	61080 490 185 00	...GASKET	1
2	PAFZZ	61080 490 184 00	...GASKET	1
3	PAFZZ	61080 490 183 00	...FILTER, FUEL	1
4	PAFZZ	61080 490 181 00	...SCREW, ALLEN	6
5	PAFZZ	61080 490 182 00	...DIAPHRAGM	1
6	PAFZZ	61080 501 299 00	..GASKET	1
			END OF FIGURE	

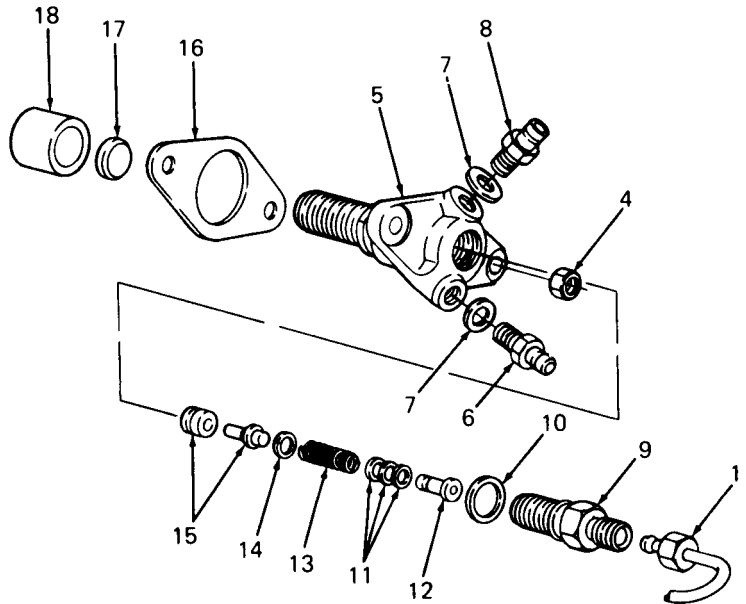
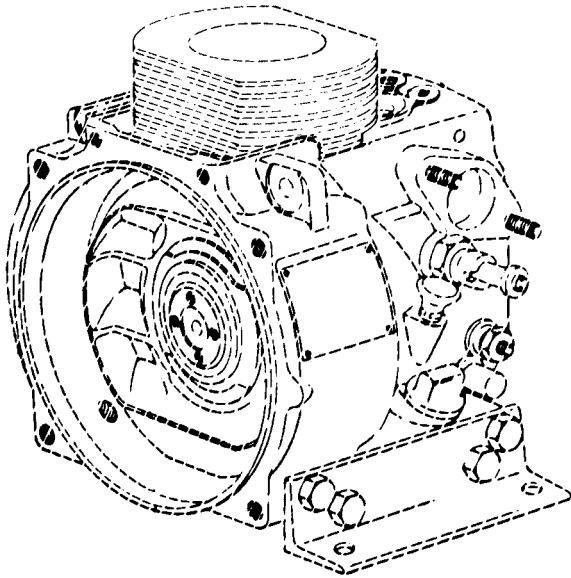
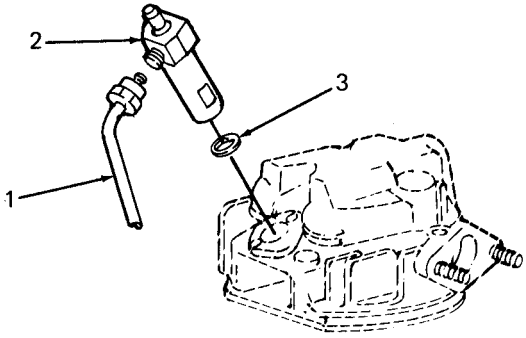


Figure 10. Injection System

SECTION II

(1) ITEM NO	(2) CODE	(2) SMR FSCM	(4) PART NUMBER	(5) DESCRIPTION AND USABLE ON CODE (UOC)	(6) QTY
GROUP 05 FUEL SYSTEM					
FIG. 10 INJECTION SYSTEM					
1	PBOZZ	61080	034 057 00	..PIPE,FUEL PRESSURE	1
2	PAFZZ	61080	400 066 00	..INJECTOR	1
3	PAFZZ	61080	400 031 00	..WASHER,JOINT	1
4	PAFZZ	61080	500 229 00	..NUT,PLAIN,HEXAGON	2
5	PBFBZ	61080	400 802 01	..PUMP,INJECTION	1
6	XDFZZ	61080	034 850 00	..CONNECTION,HOSE	1
7	PAFZZ	61080	500 011 00	..GASKET	2
8	PAFZZ	61080	006 710 01	..VALVE,NON-RETURN	1
9	XDFZZ	61080	490 031 00	...CONNECTOR	1
10	PAFZZ	61080	490 047 00	...PACKING,PREFORMED	1
11	XDFZZ	61080	490 043 00	...SHIM	3
12	XDFZZ	61080	490 039 00	...PIECE,FILLING	1
13	XDFZZ	61080	490 037 00	...SPRING,VALVE DELIVERY	1
14	PAFZZ	61080	490 044 00	...GASKET	1
15	XDFZZ	61080	490 369 00	...VALVE,DELIVERY	1
16	PAFZZ	61080	032 095 00	..GASKET 0.15MM	1
16	PAFZZ	61080	032 096 00	..GASKET 0.20MM	1
16	PAFZZ	61080	032 097 00	..SHIM 0.30MM	1
16	PAFZZ	61080	032 098 00	..SHIM 0.50MM	1
17	XDFZZ	61080	030 626 00	..PLATE	1
18	XDFZZ	61080	030 640 00	..TAPPET	1

END OF FIGURE

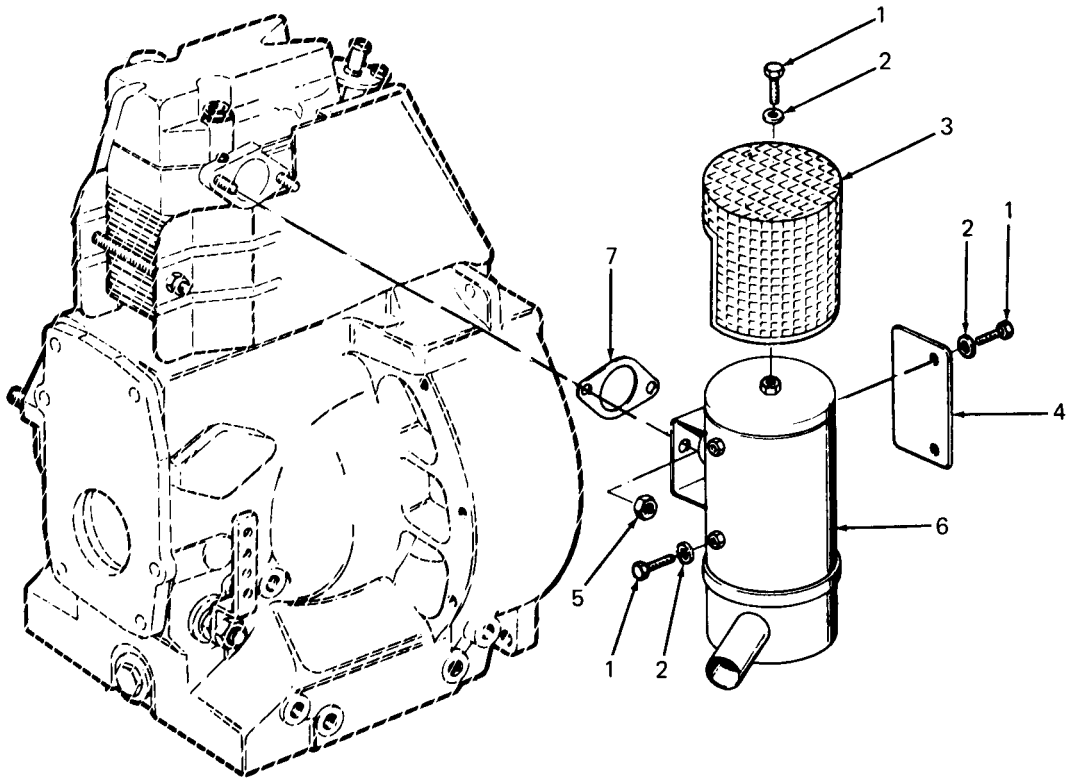


Figure 11. Exhaust System

SECTION II

(1) ITEM NO	(2) SMR CODE	(4) PART FSCM	(4) PART NUMBER	(5) DESCRIPTION AND USABLE ON CODE (UOC)	(6) QTY
				GROUP 06 EXHAUST SYSTEM	
				FIG.11 EXHAUST SYSTEM	
1	XDOZZ	61080	501 731 00	..SCREW,HEX HEAD M8X10 DIN 912-8.8ZN	4
2	XDOZZ	61080	500 168 00	..WASHER 8,4MS DIN 125-MS	4
3	XDOZZ	61080	007 852 00	..GUARD,MUFFLER	1
4	XDOZZ	61080	036 997 00	..PLATE,WARNING	1
5	PAOZZ	61080	400 816 00	..NUT,HEXAGON	2
6	PAOZZ	61080	008 649 00	..MUFFLER,EXHAUST	1
7	PAOZZ	61080	501 224 00	..GASKET	1

END OF FIGURE

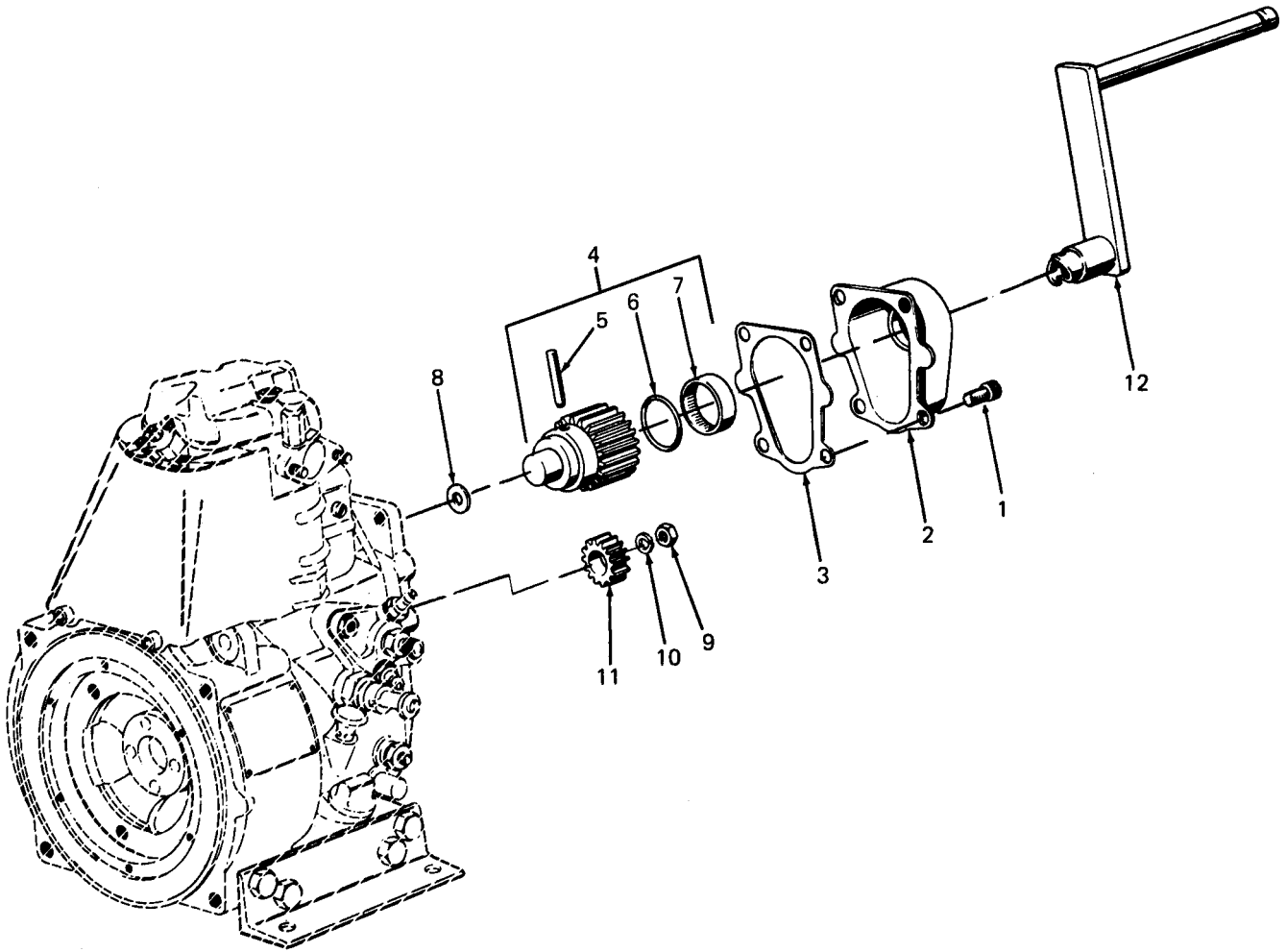


Figure 12. Crank Assembly

SECTION II

(1) ITEM NO	(2) CODE	(2) SMR FSCM	(4) PART NUMBER	(5) DESCRIPTION AND USABLE ON CODE (UOC)	(6) QTY
GROUP 07 CRANK ASSEMBLY					
FIG. 12 CRANK ASSEMBLY					
1	PAFZZ	61080	500 534 00	..SCREW,ALLEN M10X16 DIN 912-8.8	4
2	XDFZZ	61080	003 137 01	..HOUSING	1
3	PAFZZ	61080	032 100 00	..GASKET	1
4	XDFZZ	61080	004 106 11	..WHEEL ASSY, GEAR	1
5	XDFZZ	61080	032 620 00	...STUD	1
6	PAFZZ	61080	502 524 00	...SEAL,OIL	1
7	PAFZZ	61080	400 190 00	...SHELL,NEEDLE	1
8	PAFZZ	61080	400 013 00	..DISC	1
9	XDFZZ	61080	500 245 00	..NUT,HEXAGON M16X1,5 DIN 936-17TH	1
10	XDFZZ	61080	500 032 00	..WASHER,SPRING 16MM DIN 128	1
11	XDFZZ	61080	031 124 10	..PINION	1
12	PBOZZ	61080	003 150 00	..HANDLE,STARTING CRANK	1

END OF FIGURE

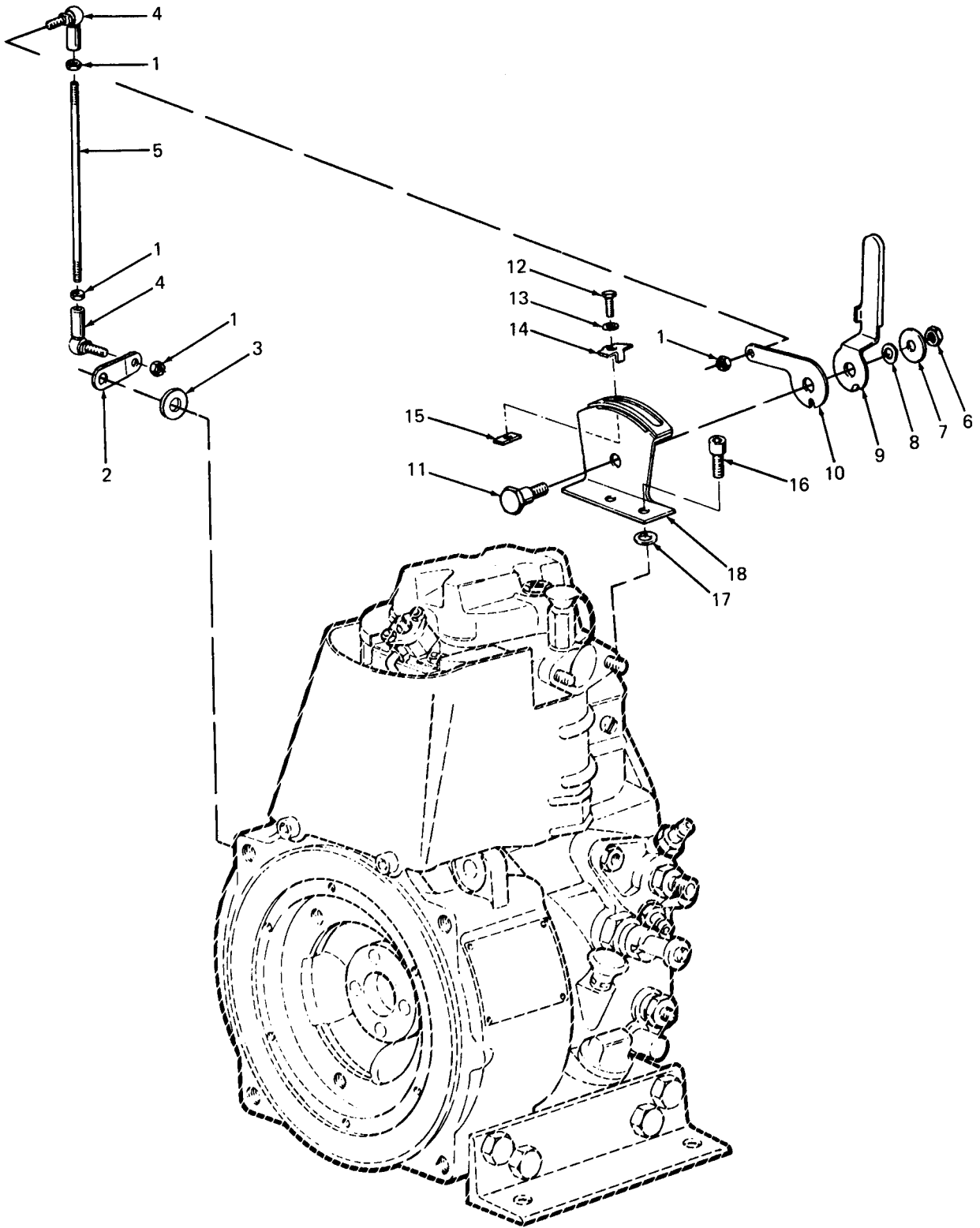


Figure 13. Throttle

SECTION II

(1) ITEM NO	(2) CODE	(2) SMR FSCM	(4) PART NUMBER	(5) DESCRIPTION AND USABLE ON CODE (UOC)	(6) QTY
GROUP 08 THROTTLE					
FIG. 13 THROTTLE					
1	PAOZZ	61080	500 227 00	..NUT,PLAIN,HEXAGON M6 DIN 934-8	2
2	XDOZZ	61080	035 119 00	..LEVER	1
3	PAOZZ	61080	031 056 00	..WASHER,FLAT	1
4	XDOZZ	61080	501 333 00	..JOINT,ANGULAR	2
5	XDOZZ	61080	035 110 00	..SCREW,ADJUSTING	1
6	PAOZZ	61080	500 232 00	..NUT,HEXAGON BM8 DIN 439-5	1
7	PAOZZ	61080	500 629 00	..DISC,WASHER B8, 4 DIN 9021-ST	1
8	PAOZZ	61080	500 035 00	..WASHER,SPRING TENSI B8 DIN 137	1
9	XDOZZ	61080	035 115 00	..LEVER,HAND	1
10	XDOZZ	61080	035 116 00	..LEVER	1
11	PAOZZ	61080	035 117 00	..SCREW	1
12	PAOZZ	61080	500 251 00	..SCREW,HEX M5X10 DIN 933-8.8	2
13	PAOZZ	61080	500 165 00	..DISC 5,3 DIN 125-ST	2
14	PAOZZ	61080	031 122 00	..FLAP,FIXING	2
15	PAOZZ	61080	031 121 01	..NUT	2
16	PAOZZ	61080	500 520 00	..SCREW,ALLEN M8X20 DIN 6912-8.8	2
17	PAOZZ	61080	500 167 00	..WASHER 8,4 DIN 125-ST	4
18	XDOZZ	61080	007 204 00	..CONSOLE	1

END OF FIGURE

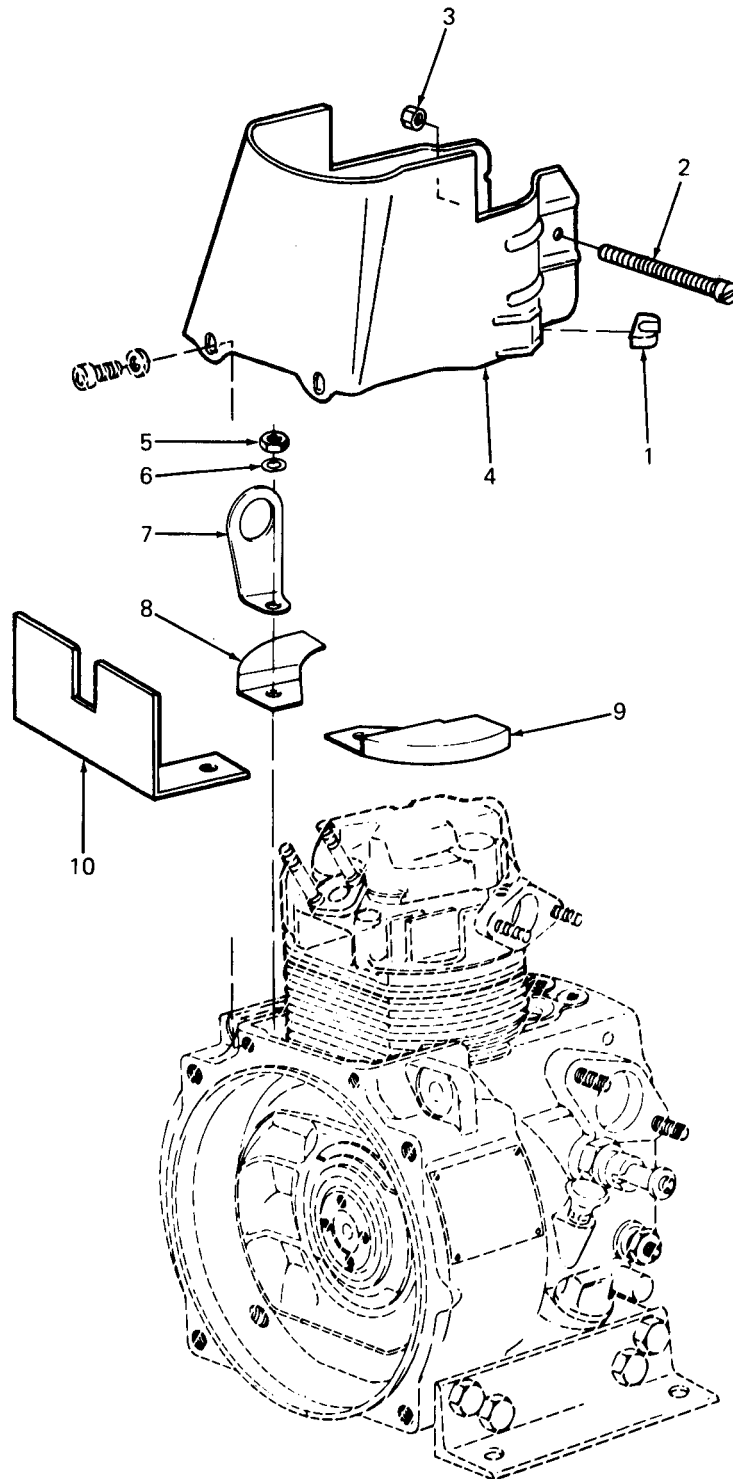


Figure 14. Cowling and Covers

SECTION II

(1) ITEM NO	(2) CODE	(2) SMR FSCM	(4) PART NUMBER	(5) DESCRIPTION AND USABLE ON CODE (UOC)	(6) QTY
				GROUP 09 CYLINDER HEAD AND CYLINDER ASSEMBLY	
				FIG. 14 COWLING AND COVERS	
1	XDOZZ	61080	031 509 00	..CLAMP	1
2	PAOZZ	61080	500 501 00	..SCREW,MACHINE AM5X90 DIN 84-4.8	1
3	PAOZZ	61080	400 282 00	..NUT,SELF-LOCKING,HE M5 SSN 440.8	1
				CU	
4	XDOZZ	61080	030 666 01	..COWLING	1
5	PAFZZ	61080	500 234 00	..NUT,PLAIN,HEXAGON M8X1 DIN 934-12	2
6	PAFZZ	61080	037 663 00	..WASHER,SPRING 38 DIN 137	2
7	XDFZZ	61080	034 578 00	..STRAP,LIFTING	1
8	XDFZZ	61080	030 665 01	..COVER	1
9	XDFZZ	61080	030 664 01	..COVER	1
10	XDFZZ	61080	034 929 00	..SUPPORT,FUEL TANK	1

END OF FIGURE

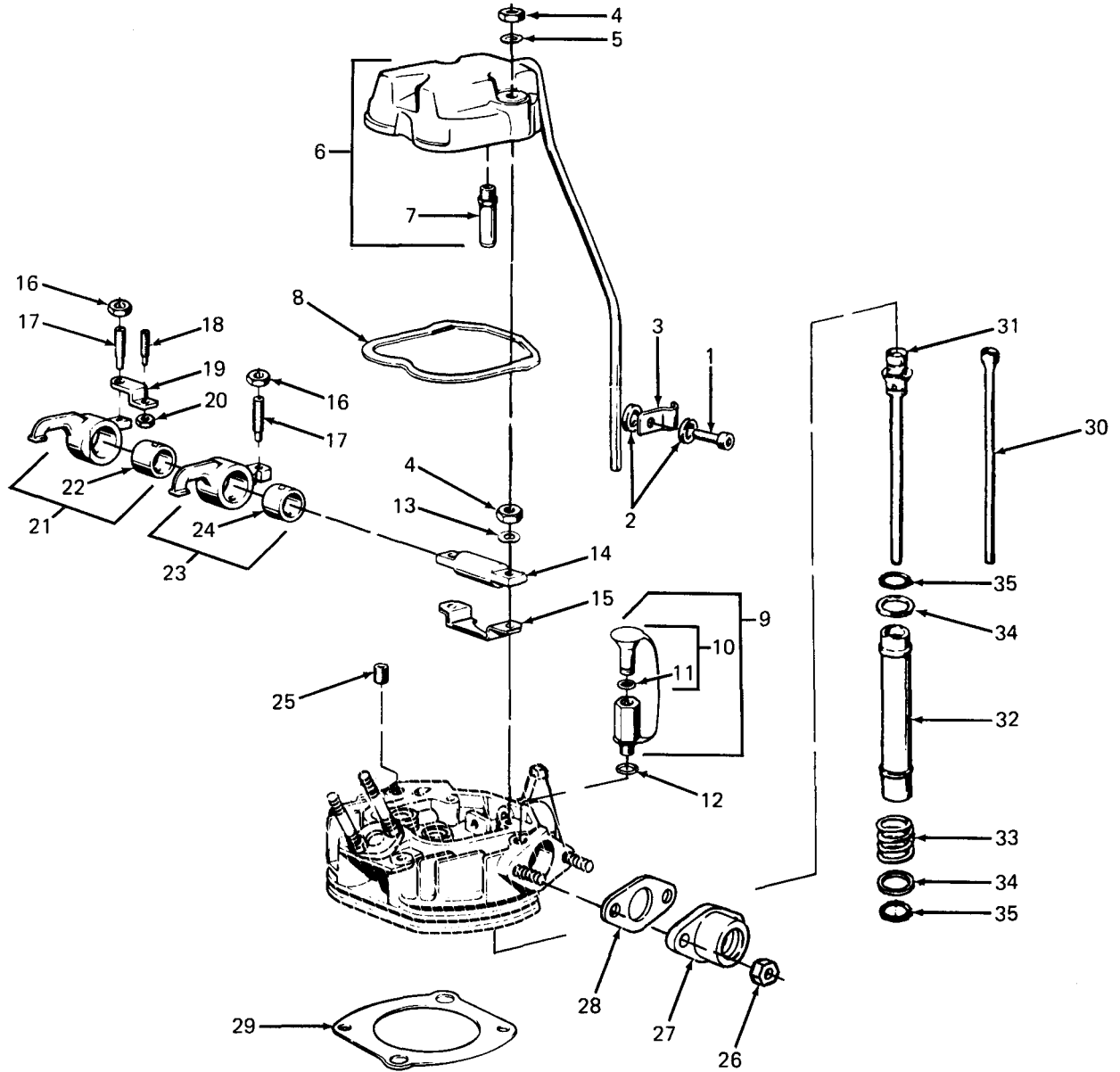


Figure 15. Cylinder Head and Push Rods

SECTION II

(1) ITEM NO	(2) CODE	(4) SMR FSCM	(4) PART NUMBER	(5) DESCRIPTION AND USABLE ON CODE (UOC)	(6) QTY
GROUP 09 CYLINDER HEAD AND CYLINDER ASSEMBLY					
FIG. 15 CYLINDER HEAD AND PUSH RODS					
1	PAOZZ	61080	500 513 00	..SCREW,ALLEN M8X10 DIN 912-8.8	1
2	PAOZZ	61080	500 010 00	..GASKET	2
3	XDOZZ	61080	031 592 00	..CLIP,PIPE	1
4	PAOZZ	61080	500 234 00	..NUT,PLAIN,HEXAGON M8X1 DIN934-12	4
5	PAOZZ	61080	500 035 00	..WASHER,SPRING TENSION 38 DIN 137	2
6	XDOZZ	61080	003 138 02	..COVER, CYL HEAD	1
7	XDOZZ	61080	003 620 04	..TUBE,BREATHER	1
8	PAOZZ	61080	032 089 02 W3	..GASKET	1
9	PAOOO	61080	003 618 01	..CUP ASSY, COLD START ASSIST	1
10	XAOZZ	61080	007 363 00 P1	..PLUG,CLOSING	1
11	PAOZZ	61080	501 541 00	...PACKING,PREFORMED	1
12	PAOZZ	61080	500 011 00	..GASKET	1
13	XDFZZ	61080	037 663 00	..WASHER	2
14	XDFZZ	61080	030 615 01	..SHAFT,ROCKER	1
15	XDFZZ	61080	030 925 00	..CLAMP	1
16	XDFZZ	61080	031 731 00	..NUT,HEXAGON	2
17	XDFZZ	61080	030 037 00	..SCREW,ADJUSTING	2
18	XDFZZ	61080	030 220 01	..SCREW,ADJUSTING	1
19	XDFZZ	61080	030 600 02	..CLAMP	1
20	XDFZZ	61080	500 227 00	..NUT,HEXAGON M6 DIN 934-8	1
21	XDFZZ	61080	006 142 01	..ROCKER	1
22	XDFZZ	61080	034 301 00	...BUSHING	1
23	XDFZZ	61080	006 143 01	..ROCKER	1
24	XDFZZ	61080	034 301 01	...BUSHING	1
25	XDFZZ	61080	500 437 00	..SCREW M12X1.5	1
26	PAOZZ	61080	500 230 00	..NUT,PLAIN,HEXAGON	2
27	XDOZZ	61080	038 926 00	..ADAPTER,AIR CLEANER	1
28	PAOZZ	61080	034 772 00 W1	..GASKET	1
29	PAFZZ	61080	035 818 00	..GASKET 0.40MM	1
29	PAFZZ	61080	035 819 00	..GASKET 0.50MM	1
29	PAFZZ	61080	035 820 00	..GASKET 0.60MM	1
29	PAFZZ	61080	035 821 00	..GASKET 0.70MM	1
29	PAFZZ	61080	035 822 00	..GASKET 0.80MM	1
30	XDFZZ	61080	030 639 01	..PUSHROD,EXHAUST	1
31	XDFZZ	61080	009 026 00	..PUSHROD,COMPLETE, INTAKE	1
32	XDFZZ	61080	032 090 02	..TUBE,PROTECTION	2
33	XDFZZ	61080	031 851 00	..SPRING,PRESSURE	2
34	XDFZZ	61080	032 091 01	..SHIM	4
35	PAFZZ	61080	502 580 00	..PACKING,PREFORMED	4

END OF FIGURE

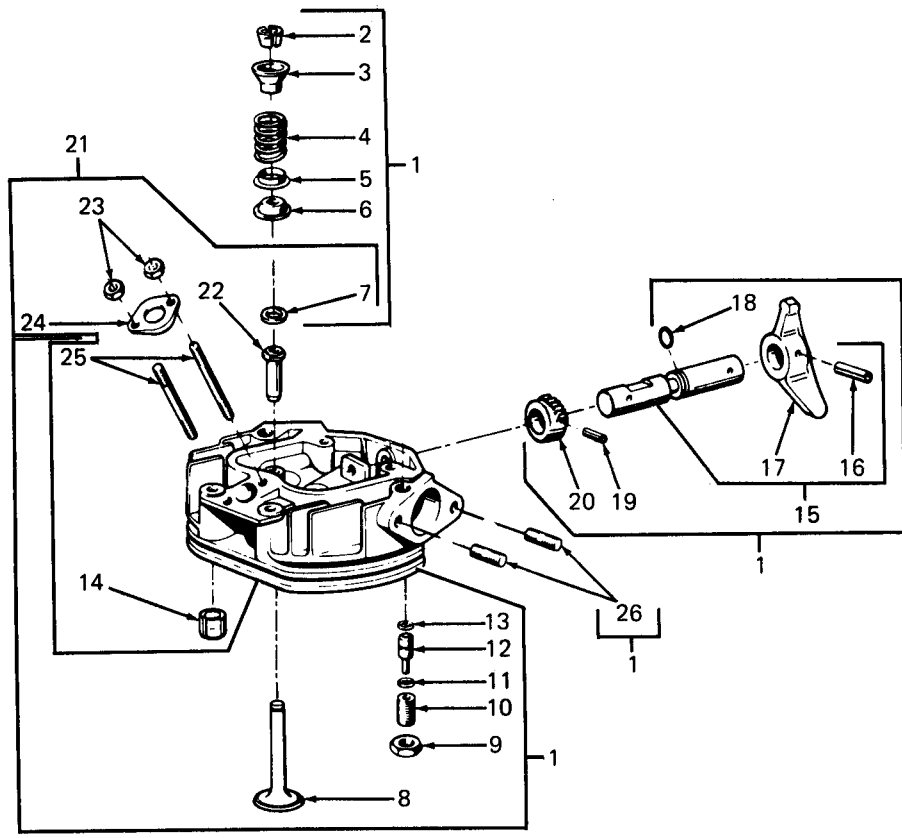


Figure 16. Cylinder Head and Valve Assembly

SECTION II

(1) ITEM NO	(2) CODE	(2) SMR FSCM	(4) PART NUMBER	(5) DESCRIPTION AND USABLE ON CODE (UOC)	(6) QTY
GROUP 09 CYLINDER HEAD AND CYLINDER ASSEMBLY					
FIG. 16 CYLINDER HEAD AND VALVE ASSEMBLY					
1	PBFHH	61080	009 076 01	..CYLINDER HEAD ASSY	1
2	XDHZZ	61080	031 719 10	...COLLET	2
3	XDHZZ	61080	030 605 01	...CUP	2
4	XDHZZ	61080	032 081 00	...SPRING, VALVE	2
5	XDHZZ	61080	032 084 00	...WASHER	2
6	XDHZZ	61080	032 080 01	...CAP	2
7	XDHZZ	61080	037 538 00	...RING, SPACER	2
8	XDHZZ	61080	035 698 20	...VALVE	2
9	XDHZZ	61080	500 238 00	...NUT, HEXAGON BM10	1
10	XDHZZ	61080	030 611 00	...PIN, THREADED	1
11	XDHZZ	61080	500 426 00	...PLATE, SPRING A8 DIN 2093	10
12	XDHZZ	61080	030 638 00	...PIN	1
13	PAHZZ	61080	501 542 00	...PACKING, PREFORMED	1
14	XDHZZ	61080	500 357 00	...PIN 11X12 DIN 7346	2
15	XDHHH	61080	007 468 00	...SHAFT ASSY, DECOMPRESSION	1
16	XDHZZ	61080	500 346 00PIN 4X18 DIN1481	1
17	XDHZZ	61080	031 734 01	...HANDLE	1
18	PAHZZ	61080	501 543 00	...PACKING, PREFORMED	1
19	XDHZZ	61080	500 341 00	...PIN 3X16 DIN1481	1
20	XDHZZ	61080	035 706 00	...PINION, DECOMPRES	1
21	XAHZZ	61080	007 401 21	...HEAD, CYLINDER	1
22	XDHZZ	61080	032 082 10	...GUIDE, VALVE	2
23	PAFZZ	61080	500 227 00NUT, PLAIN, HEXAGON M6 DIN 934-8	2
24	PAFZZ	61080	034 473 00CLAMP, FUEL INJECTIO	1
25	PAFZZ	61080	501 110 00STUD, PLAIN M6X55 DIN 835-8.8	2
26	PAFZZ	61080	500 372 00STUD, PLAIN M8X15 DIN 835-10.9	4

END OF FIGURE

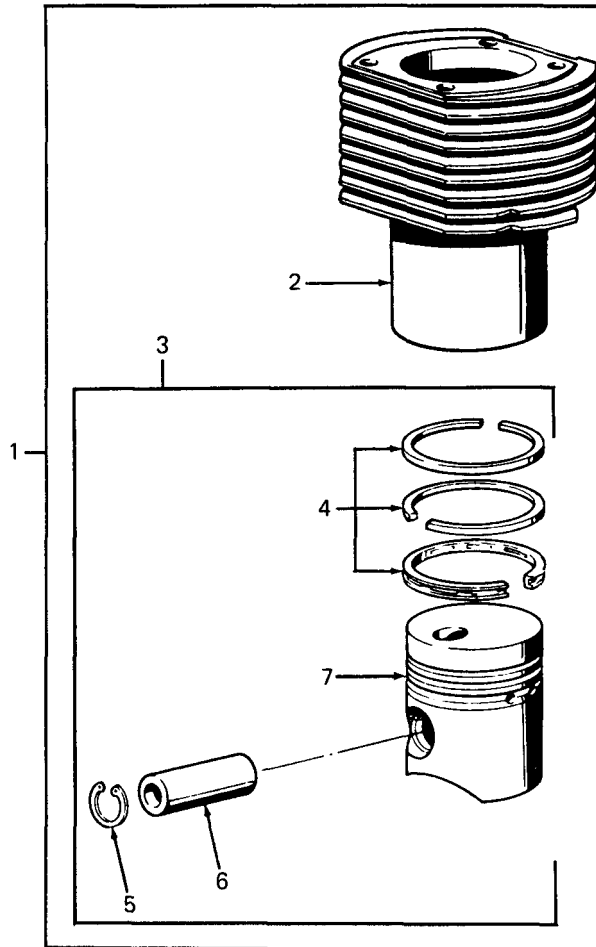


Figure 17. Cylinder and Piston

SECTION II

(1) ITEM NO	(2) CODE	(2) SMR FSCM	(4) PART NUMBER	(5) DESCRIPTION AND USABLE ON CODE (UOC)	(6) QTY
				GROUP 09 CYLINDER HEAD AND CYLINDER ASSEMBLY	
				FIG. 17 CYLINDER AND PISTON	
1	PBFFF	61080	009 127 00	..CYLINDER WITH PISTON ASSEMBLY	1
2	XDFZZ	61080	035 833 00	...CYLINDER	1
3	XDFZZ	61080	009 041 00	...PISTON ASSY	1
4	PBFZZ	61080	009 043 00RING SET,PISTON	1
5	PBFZZ	61080	500 206 00RING,RETAINING 25X1,2 DIN 472	2
6	XDFZZ	61080	501 075 00PIN,GUDGEON	1
				END OF FIGURE	

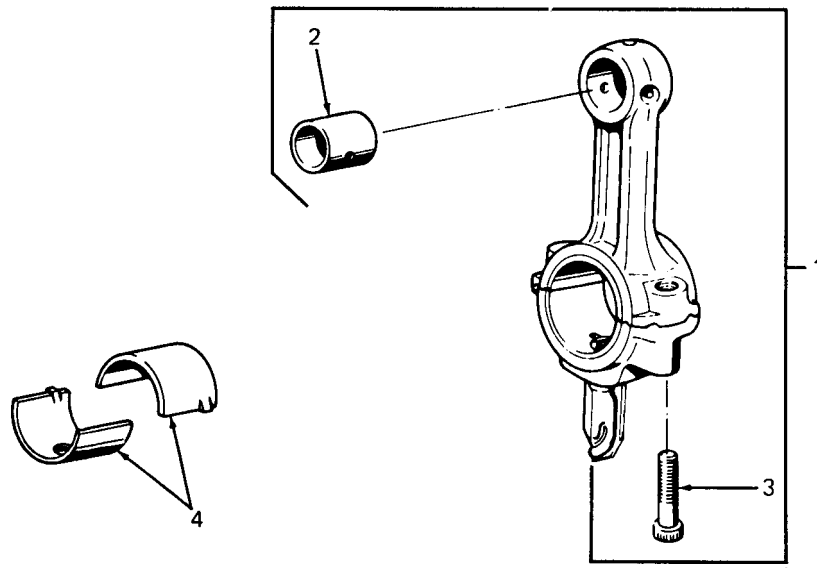


Figure 18. Connecting Rod

SECTION II

(1) ITEM NO	(2) SMR CODE	(4) PART FSCM	(4) PART NUMBER	(5) DESCRIPTION AND USABLE ON CODE (UOC)	(6) QTY
				GROUP 10 CRANKCASE ASSEMBLY	
				FIG. 18 CONNECTING ROD	
1	XDHHH	61080	003 613 00	..ROD,CONNECTING	1
2	PBHZZ	61080	032 069 00	...BEARING,SLEEVE CONNECTING	1
3	XDHZZ	61080	033 937 00	...SCREW,ALLEN M8X35	2
4	PBHZZ	61080	032 067 00	..BEARING,SLEEVE	1
				END OF FIGURE	

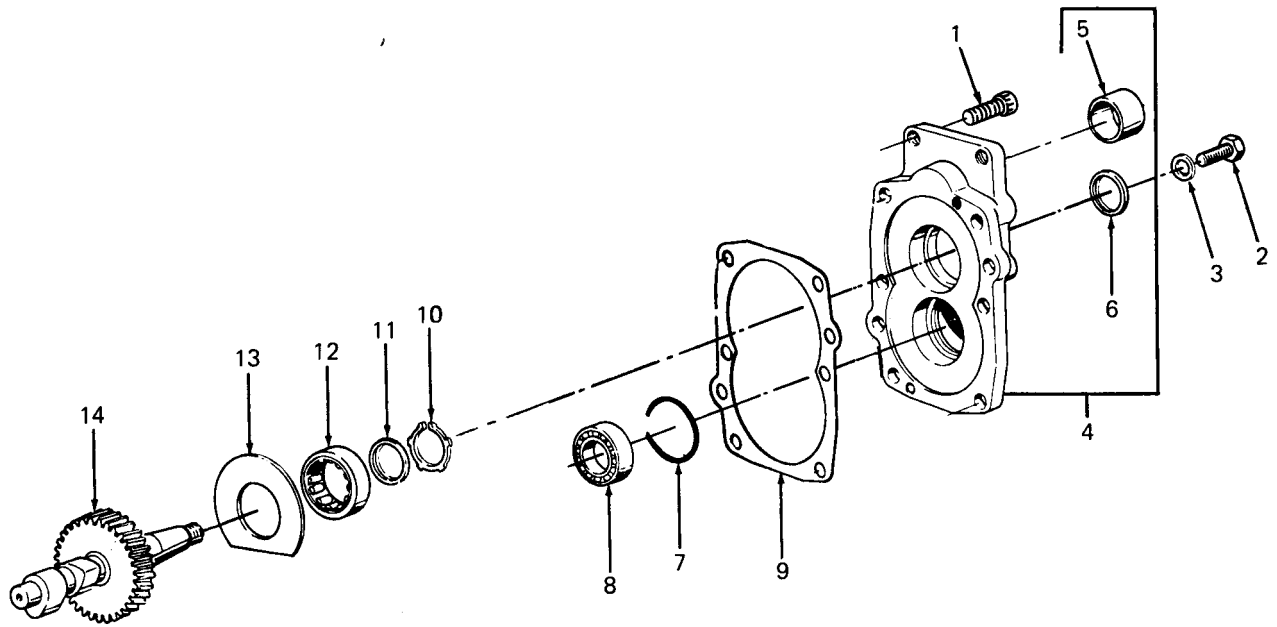


Figure 19. Timing Cover and Camshaft

SECTION II

(1) ITEM NO	(2) CODE	(2) SMR FSCM	(4) PART NUMBER	(5) DESCRIPTION AND USABLE ON CODE (UOC)	(6) QTY
GROUP 10 CRANKCASE ASSEMBLY					
FIG.19 TIMING COVER AND CAMSHAFT					
1	XDHZZ	61080	500 538 00	..SCREW,ALLEN M10X25 DIN 912-8.8	2
2	XDHZZ	61080	500 292 00	..SCREW,HEX M10X25 DIN 933-8.8	4
3	XDHZZ	61080	500 010 00	..JOINT	5
4	XDHHH	61080	003 623 10	..COVER,TIMING	1
5	PAHZZ	61080	400 329 00	...BUSHING,DRY	1
6	PAHZZ	61080	400 337 00	...SEAL,PLAIN ENCASED	1
7	XDHZZ	61080	036 124 00	...RING,INTERMEDIATE	1
8	XDHZZ	61080	500 129 00	..BEARING,BALL	1
9	PAHZZ	61080	032 092 02	..GASKET	1
10	XDHZZ	61080	400 379 00	..CIRCLIP	1
11	XDHZZ	61080	032 780 00	..WHEEL,FLANGED	1
12	XDHZZ	61080	500 622 00	..BEARING,ROLLER	1
13	XDHZZ	61080	032 093 00	..SPACER	1
14	XDHZZ	61080	034 300 00	..CAMSHAFT	1

END OF FIGURE

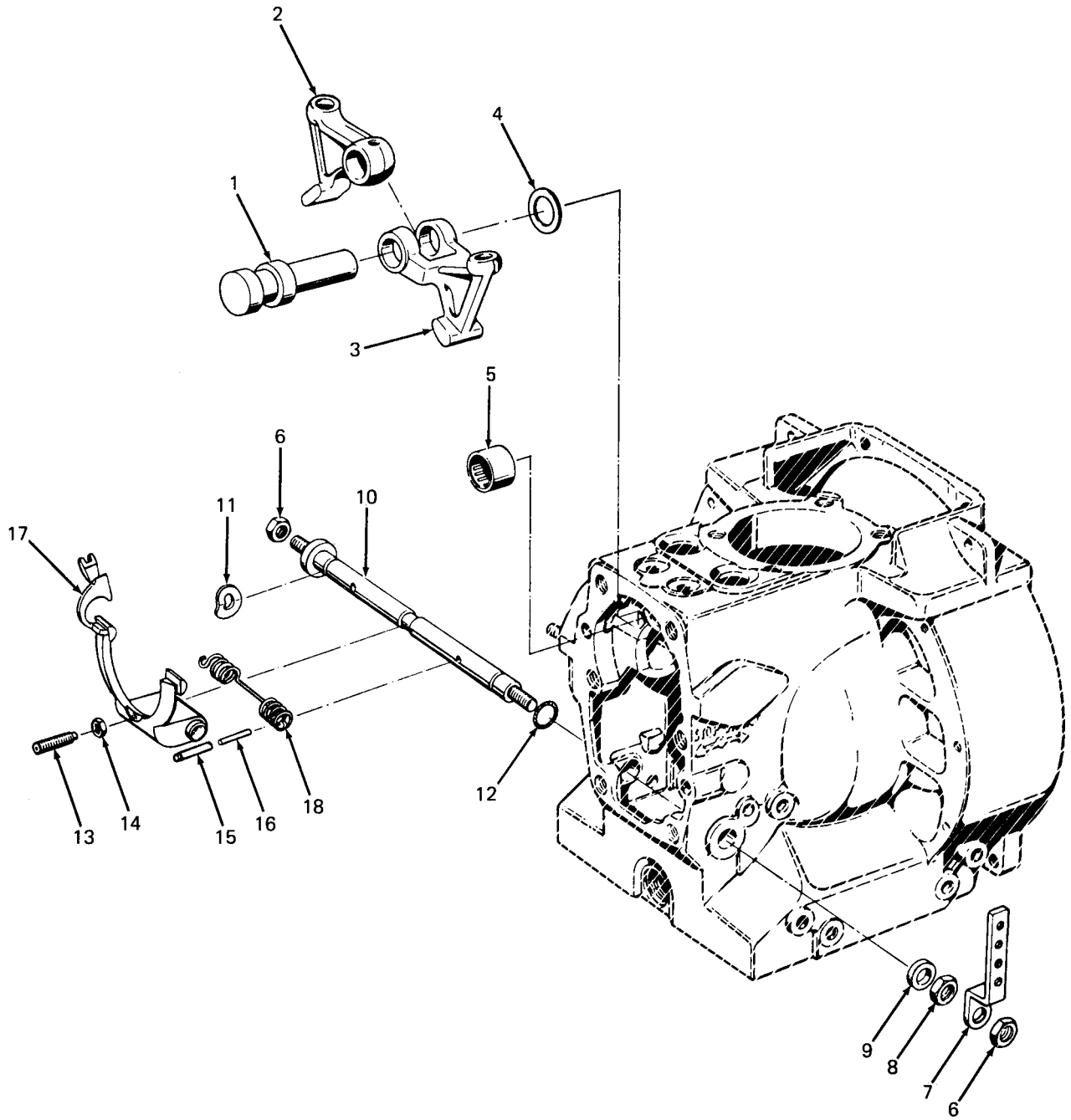


Figure 20. Governor

SECTION II

(1) ITEM NO	(2) CODE	(2) SMR FSCM	(4) PART NUMBER	(5) DESCRIPTION AND USABLE ON CODE (UOC)	(6) QTY
GROUP 10 CRANKCASE ASSEMBLY					
FIG. 20 GOVERNOR					
1	XDHZZ	61080	030 597 00	..SPINDLE, CAM FOLLOWER	1
2	XDHZZ	61080	030 634 01	..FOLLOWER,CAM	1
3	XDHZZ	61080	030 633 01	..FOLLOWER,CAM	1
4	XDHZZ	61080	031 698 00	..SHIM	1
5	XDHZZ	61080	400 368 00	..BEARING,NEEDLE	1
6	XDHZZ	61080	500 235 00	..NUT,HEXAGON M10 DIN 934-8	2
7	XDHZZ	61080	032 060 00	..LEVER	1
8	XDHZZ	61080	032 061 00	..NUT,HEXAGON 0.5MM UNDERSIZE	1
9	XDHZZ	61080	031 462 00	..DISC, FRICTION	1
10	XDHZZ	61080	004 273 03	..SHAFT	1
11	XDHZZ	61080	500 036 00	..WASHER,SPRING B12 DIN 137	1
12	PBHZZ	61080	400 223 00	..PACKING,PREFORMED	2
13	XDHZZ	61080	500 042 00	..PIN,THREADED M6X20 DIN 915-45H	1
14	XDHZZ	61080	500 227 00	..NUT,HEXAGON M6 DIN 934-8	1
15	XDHZZ	61080	500 349 00	..PIN 5X36 DIN 1481	2
16	XDHZZ	61080	500 343 00	..PIN 3X36 DIN 1481	2
17	XDHZZ	61080	003 087 04	..LEVER,GOVERNOR	1
18	XDHZZ	61080	034 442 00	..SPRING,GOVERNOR	1

END OF FIGURE

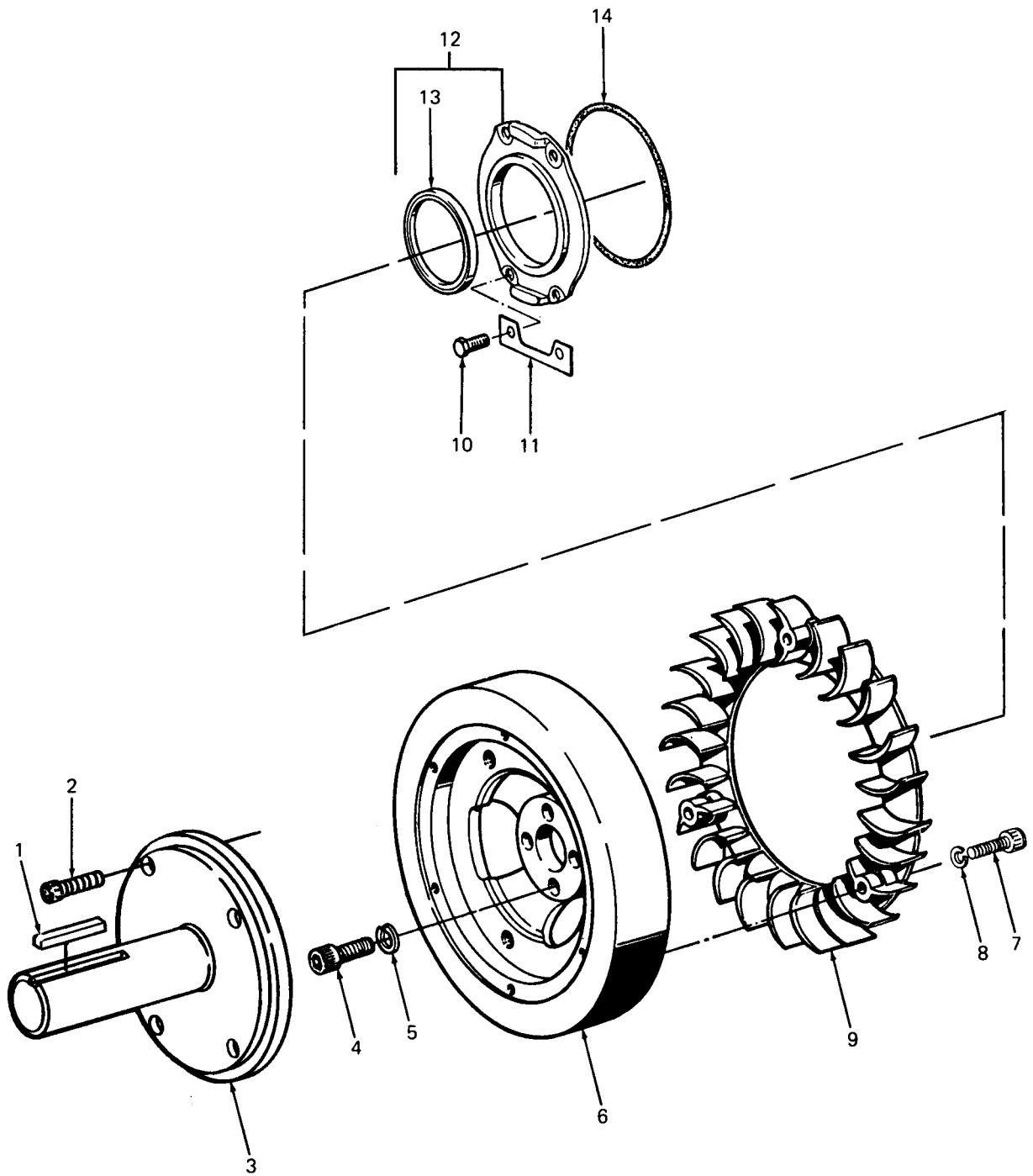


Figure 21. Flywheel and Oil Seal

SECTION II

(1) ITEM NO	(2) SMR CODE	(4) PART FSCM	(4) PART NUMBER	(5) DESCRIPTION AND USABLE ON CODE (UOC)	(6) QTY
GROUP 10 CRANKCASE ASSEMBLY					
FIG.21 FLYWHEEL AND OIL SEAL					
1	PAOZZ	61080	500 117 00	..KEY,FITTING A8X7X63 DIN 6885	1
2	XDFZZ	61080	500 538 00	..SCREW,ALLEN M10X25 DIN 912-8.8	3
3	XDFZZ	61080	039 071 00	..STUBSHAFT	1
4	XDFZZ	61080	500 545 00	..SCREW,ALLEN M10X35 DIN 912-10.9	4
5	XDFZZ	61080	500 029 00	..WASHER,SPRING 10MM DIN 128	4
6	XDFZZ	61080	030 632 01	..FLYWHEEL	1
7	XDFZZ	61080	400 356 00	..SCREW,ALLEN	3
8	XDFZZ	61080	400 278 00	..WASHER,LOCK	3
9	XDFZZ	61080	006 350 00	..RING,BLOWER	1
10	XDHZZ	61080	500 255 00	..SCREW,HEX M6X12 DIN 933-8.8	4
11	XDHZZ	61080	032 059 01	..PLATE,SECURITY	2
12	XDHZZ	61080	005 630 01	..SUPPORT	1
13	PBHZZ	61080	400 342 00	...SEAL,PLAIN ENCASED	1
14	PBHZZ	61080	501 540 00	..PACKING,PREFORMED	1

END OF FIGURE

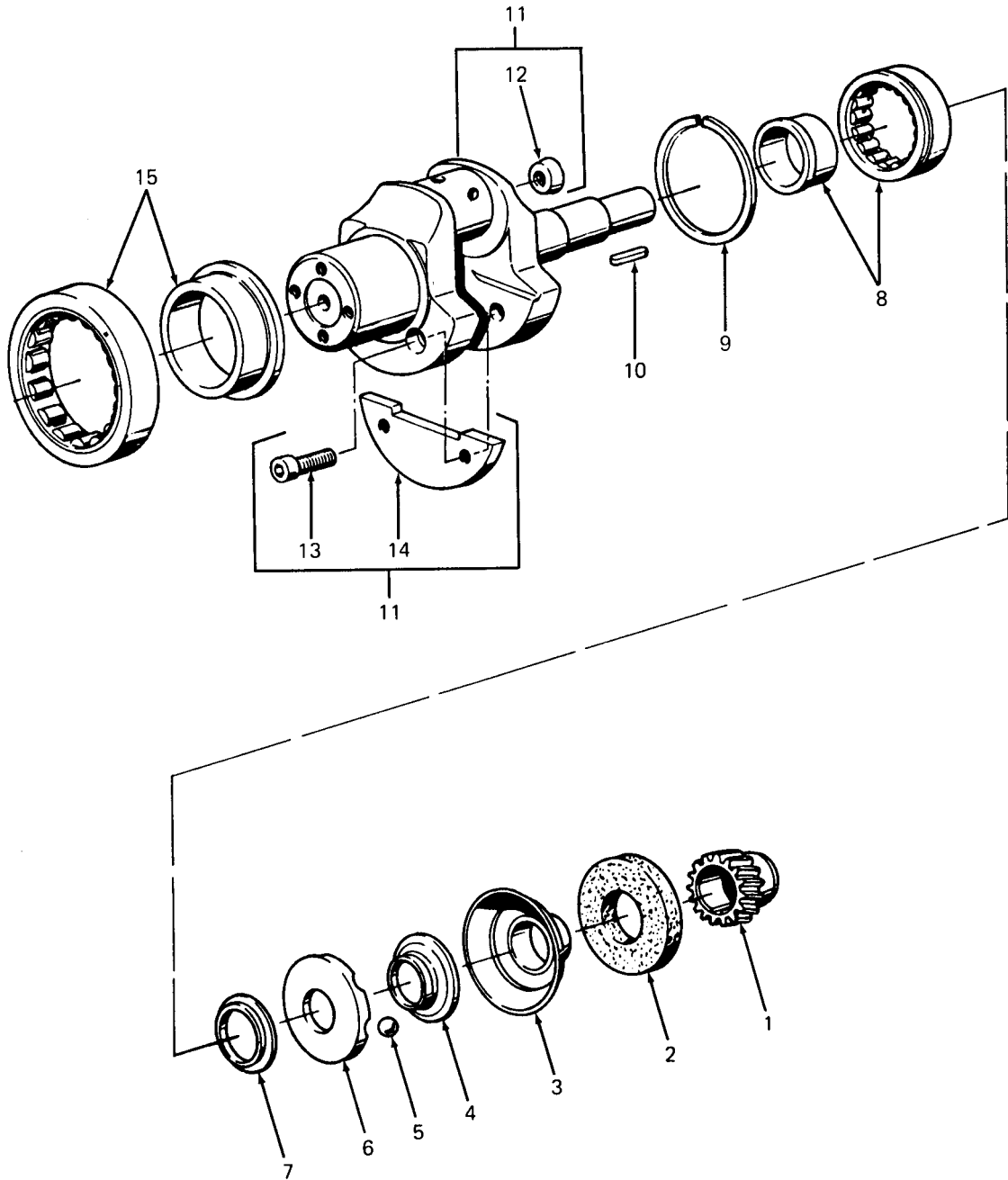


Figure 22. Crankshaft

SECTION II

(1) ITEM NO	(2) SMR CODE	(4) PART FSCM	(4) PART NUMBER	(5) DESCRIPTION AND USABLE ON CODE (UOC)	(6) QTY
GROUP 10 CRANKCASE ASSEMBLY					
FIG. 22 CRANKSHAFT					
1	XDHZZ	61080	030 648 01	..GEARWHEEL	1
2	XDHZZ	61080	030 045 01	..DISC,SLIDING	1
3	XDHZZ	61080	007 420 00	..SHELL,BALL	1
4	XDHZZ	61080	031 700 01	..DISC,BALL HUB	1
5	XDHZZ	61080	500 100 00	..BALL 12MJM DIAMETER	4
6	XDHZZ	61080	030 066 02	..HUB,BALL	1
7	XDHZZ	61080	032 066 00	..SPACER	1
8	XDHZZ	61080	500 477 00	..BEARING,ROLLER	1
9	XDHZZ	61080	500 362 00	..CIRCLIP SP 72 DIN 5417	1
10	XDHZZ	61080	500 111 00	..KEY A 6X4 28 DIN 6885	1
11	XDHZZ	61080	003 612 02	..CRANKSHAFT ASSY	1
12	XDHZZ	61080	031 950 00	...COVER	1
13	XDHZZ	61080	500 518 00	...SCREW,ALLEN M8X18 DIN 912-8.8	4
14	XDHZZ	61080	030 609 01	...WEIGHT,COUNTER	2

END OF FIGURE

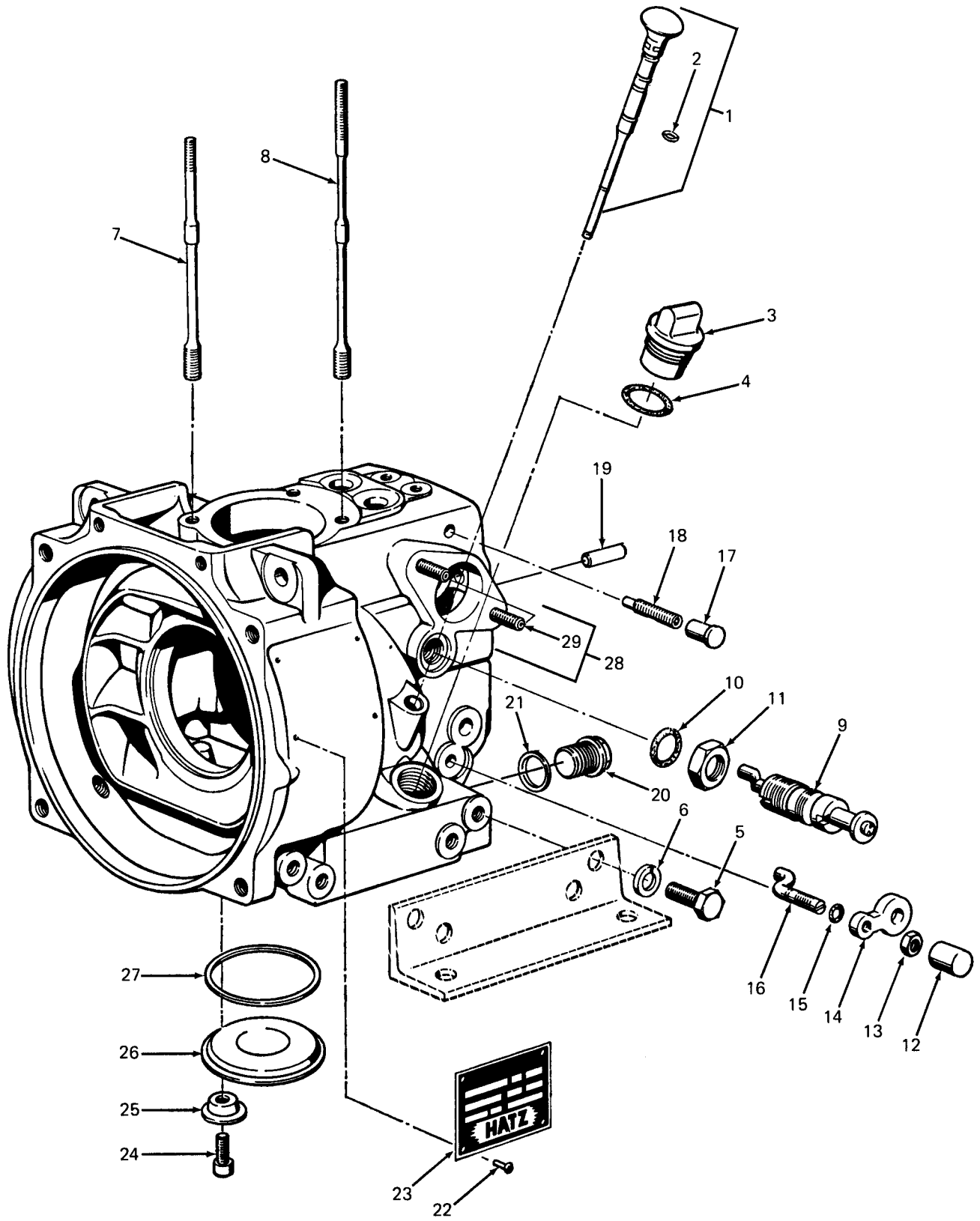


Figure 23. Crankcase

SECTION II

(1) ITEM NO	(2) CODE	(2) SMR FSCM	(4) PART NUMBER	(5) DESCRIPTION AND USABLE ON CODE (UOC)	(6) QTY
GROUP 10 CRANKCASE ASSEMBLY					
FIG. 23 CRANKCASE					
1	PBOZZ	61080	003 088 02	..DIPSTICK,OIL	1
2	PAOZZ	61080	400 220 00	..PACKING,PREFORMED	2
3	PBOZZ	61080	030 690 04 P1	..SCREW,CAP	1
4	PAOZZ	61080	501 538 00	..PACKING,PREFORMED	1
5	PAFZZ	61080	500 292 00	..BOLT,MACHINE M10X25 DIN 933-8.8	8
6	PAFZZ	61080	500 029 00	..WASHER,LOCK 10MM DIN 128	8
7	PBFZZ	61080	032 077 01	..STUD,RECESSED AND S	2
8	PBFZZ	61080	032 076 00	..STUD,RECESSED AND S	2
9	XDFZZ	61080	003 624 00	..DEVICE,EXTRA FUEL	1
10	PAHZZ	61080	400 228 00	..PACKING,PREFORMED	1
11	XDHZZ	61080	500 246 00	..NUT,HEXAGON M20X1.5 DIN 936-5	1
12	XDHZZ	61080	032 058 00	..CAPSULE	1
13	XDHZZ	61080	500 229 00	..NUT,HEXAGON M8 DIN 934-8	1
14	XDHZZ	61080	031 049 01	..PLATE	1
15	PAHZZ	61080	400 217 00	..GASKET	1
16	XDHZZ	61080	030 604 03	..PIN,ECCENTRIC	1
17	XDHZZ	61080	400 397 01	..PLUG,PROTECTION	1
18	XDHZZ	61080	500 621 00	..PIN,THREADED AM 8X25 DIN 915-TUFLOK	1
19	XDHZZ	61080	031 693 00	..PIN,GUIDE	2
20	PBOZZ	61080	031 691 03 W1	..PLUG,OIL DRAIN	1
21	PAOZZ	61080	500 015 00 W7	..JOINT	1
22	XDOZZ	61080	400 025 00	..RIVET,BLIND	4
23	XDOZZ	61080	036 396 00	..PLATE,NAME	1
24	XDHZZ	61080	500 504 00	..SCREW,ALLEN M6X8 DIN 6912-8.8	4
25	XDHZZ	61080	032 062 00	..CAP	4
26	XDHZZ	61080	032 056 02	..COVER	1
27	PBHZZ	61080	400 238 00	..PACKING,PREFORMED	1
28	XDHZZ	61080	009 128 00	..CRANKCASE	1
29	PBFZZ	61080	500 373 00	..STUD,PLAIN M8X18 DIN 835-10.9	2

END OF FIGURE

TM 5-4320-304-24P
TM-08922A-24P/2

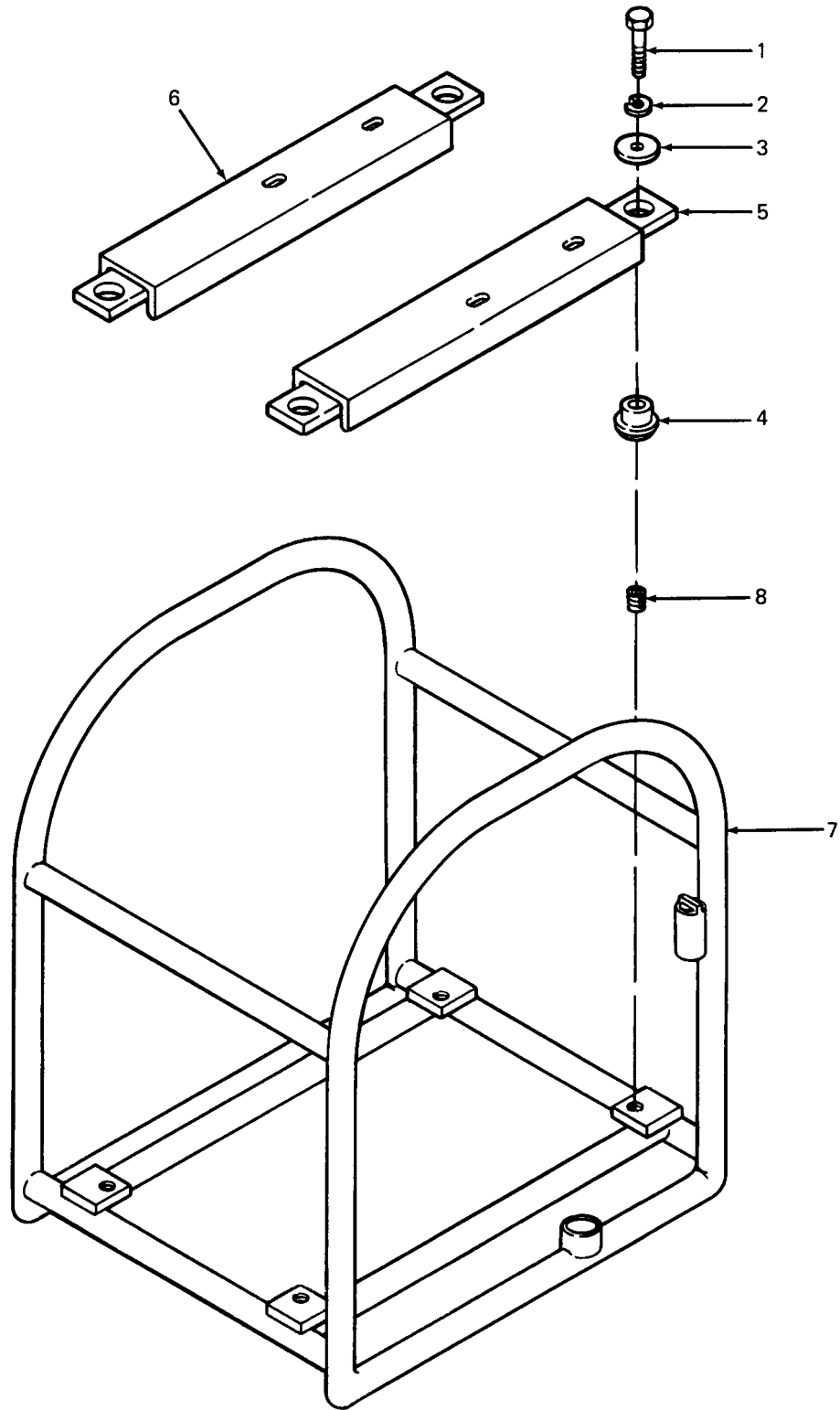


Figure 24. Frame Assembly

SECTION II

(1) ITEM NO	(2) SMR CODE	(4) PART FSCM	(4) PART NUMBER	(5) DESCRIPTION AND USABLE ON CODE (UOC)	(6) QTY
GROUP 11 FRAME ASSEMBLY					
FIG. 24 FRAME ASSEMBLY					
1	PAFZZ	96906	MS90728-65	.SCREW,CAP,HEXAGON H 3/8-16X1-3/4 LONG	4
2	PAFZZ	96906	MS35338-46	.WASHER,LOCK 3/8 IN	4
3	PAFZZ	96906	MS63040-7	.WASHER	4
4	PBFZZ	79403	13200E8819	.MOUNT,SHOCK	4
5	XDFZZ	05748	72027SA	.RAIL,LEFT	1
6	XDFZZ	05748	72026SA	.RAIL,RIGHT	1
7	XDFFF	05748	77831SA	.FRAME	1
8	PBFZZ	96906	MS122083	..INSERT,SCREW THREAD 3/8-16 THREAD X .375 INCH LONG	4
END OF FIGURE					

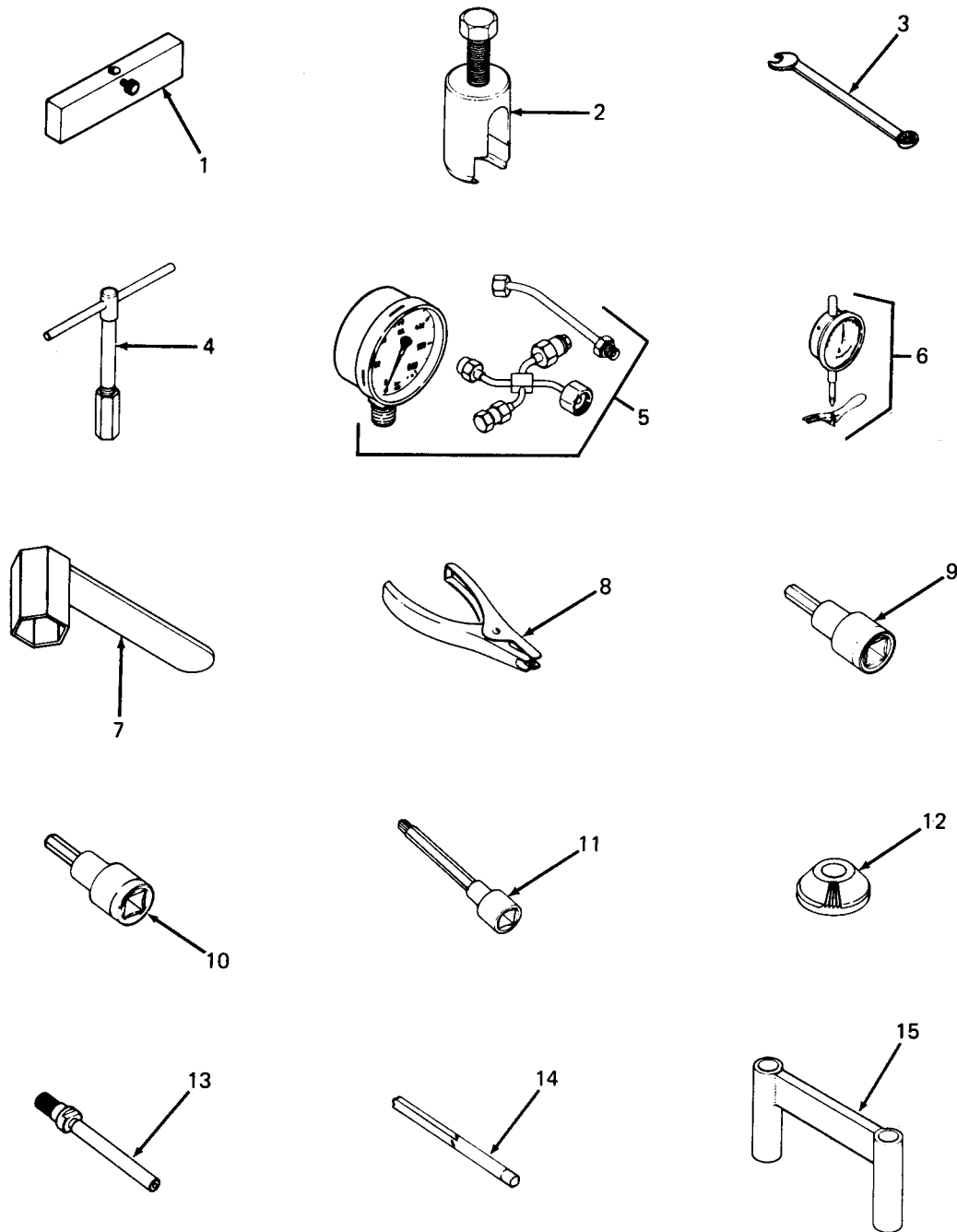


Figure 25. Special Tools (Sheet 1 of 2)

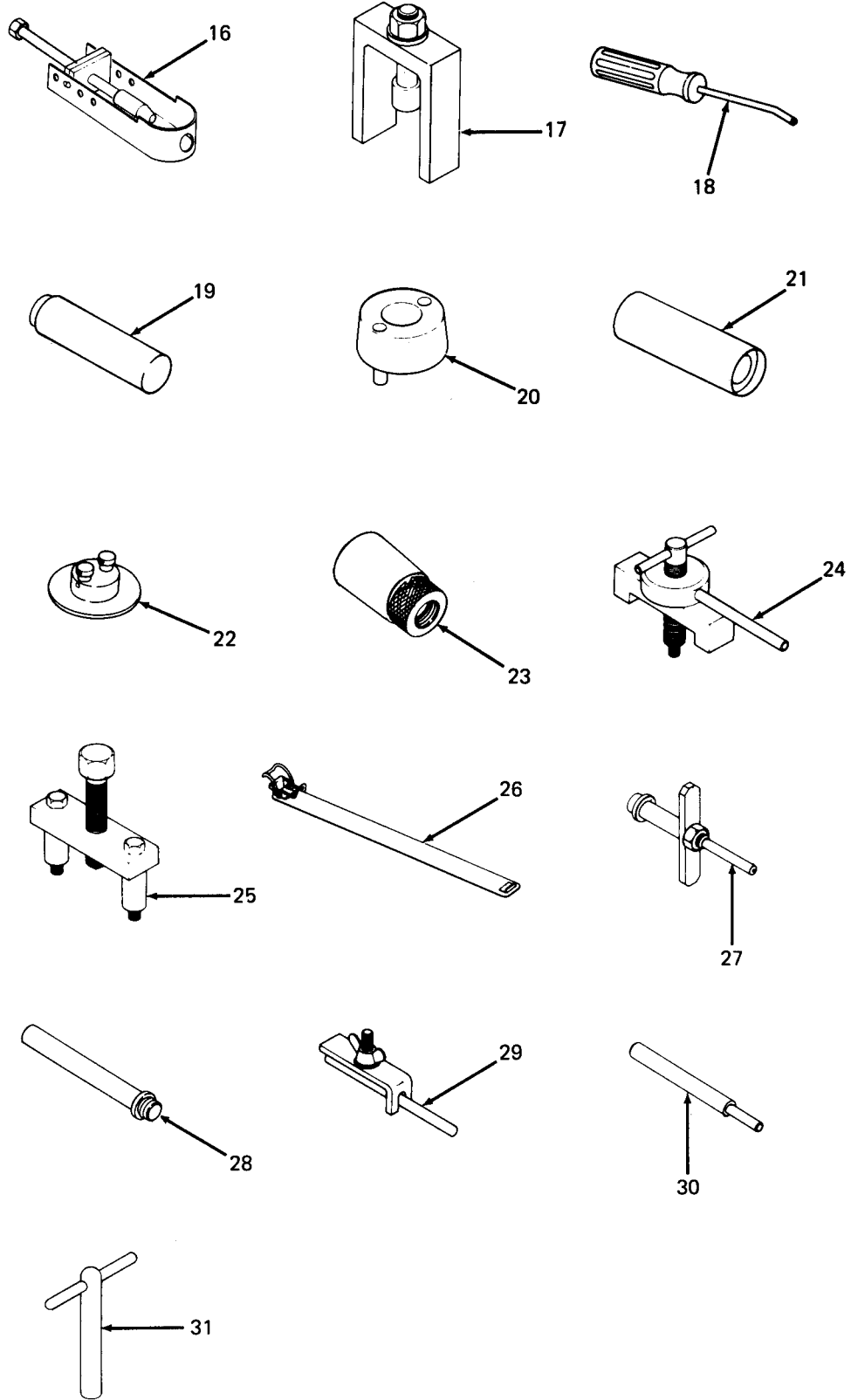


Figure 25. Special Tools (Sheet 2 of 2)

(1) ITEM NO	(2) SMR FSCM CODE	(4) PART NUMBER	(5) DESCRIPTION AND USABLE ON CODE (UOC)	(6) QTY
GROUP 13 SPECIAL TOOLS LIST				
FIG. 25 SPECIAL TOOLS				
1	PDFZZ	61080	603 114 00	
2	PDHZZ	61080	603 823 00	
3	PDOZZ	61080	618 306 00	
4	PDHZZ	61080	604 581 00	
5	PDFZZ	61080	604 628 00	
6	PDFZZ	61080	612 087 00	
7	PDFZZ	61080	668 335 00	
8	PDFZZ	61080	612 090 00	
9	PDHZZ	61080	612 091 00	
10	PDOZZ	61080	612 095 00	
11	PDFZZ	61080	612 099 00	
12	PDHZZ	61080	612 103 00	
13	PDHZZ	61080	612 104 00	
14	PDHZZ	61080	612 107 00	
15	PDFZZ	61080	612 752 00	
16	PDFZZ	61080	614 957 00	
17	PDHZZ	61080	618 168 00	
18	PDHZZ	61080	618 305 00	
19	PDHZZ	61080	666 067 00	
20	PDHZZ	61080	666 068 00	
21	PDHZZ	61080	666 069 00	
22	PDHZZ	61080	666 074 00	
23	PDHZZ	61080	666 075 00	
24	PDHZZ	61080	666 324 00	
25	PDHZZ	61080	666 327 01	
26	PDFZZ	61080	666 346 00	
27	PDHZZ	61080	666 418 00	
28	PDHZZ	61080	666 425 00	
29	PDFZZ	61080	668 383 00	
30	PDHZZ	61080	669 347 00	
31	PDHZZ	61080	670 323 00	

END OF FIGURE

TM5-4320-304-24P
TM-08922A-24P/2

SECTION II

(1) ITEM NO	(2) SMR FSCM CODE	(4) PART NUMBER	(5) DESCRIPTION AND USABLE ON CODE (UOC)	(6) QTY
1	PAOZZ	87373	801-4 HOSE, NONMETALLIC END OF FIGURE	5

GROUP 12 BULK MATERIAL LIST
FIG. BULK

BULK-1

CROSS-REFERENCE INDEXES

NATIONAL STOCK NUMBER INDEX

STOCK NUMBER	FIG.	ITEM	STOCK NUMBER	FIG.	ITEM
5315-00-043-1787	2	27	5330-01-074-1503	15	29
5310-00-045-3296	1	4	5330-01-074-1504	19	9
	1	10	5330-01-074-2105	15	29
5305-00-206-3689	2	22	5330-01-074-2106	15	29
5306-00-225-9098	2	17	5330-01-074-2107	15	29
5330-00-263-8015	2	15	5330-01-074-2108	15	29
5305-00-269-3211	7	4	5330-01-074-2109	15	2
4730-00-277-6845	2	3	5306-01-074-6815	23	5
5340-00-290-4504	3	5	5330-01-077-3913	15	11
5340-00-290-4521	3	4	5330-01-078-4508	10	16
5340-00-331-4774	24	8	2910-01-079-8052	16	24
5305-00-637-1119	2	7	5310-01-079-9886	13	17
5310-00-637-9541	7	2	5330-01-079-9960	21	14
	24	2	5310-01-080-0025	10	4
5365-00-712-5972	2	20	5310-01-080-0033	14	3
5310-00-712-7731	2	21	5330-01-080-1776	10	7
5305-00-725-2317	7	3		15	12
5310-00-732-0558	7	1	3120-01-080-3017	18	2
5310-00-732-0560	2	12	3120-01-080-3018	18	4
5310-00-809-5998	2	13	5310-01-080-4986	15	26
5305-00-821-3869	24	1	5310-01-080-4987	14	5
5310-00-880-7746	2	4		15	4
5310-00-934-9758	1	3	5310-01-080-4999	23	6
	1	9	5310-01-081-0142	13	1
5305-00-984-6211	1	5		16	23
	1	11	5330-01-082-6176	10	16
4820-00-991-6517	2	6	4730-01-100-0109	3	1
4730-01-004-5105	2	2	5330-01-100-0638	23	10
5307-01-013-7888	2	11	5310-01-100-5204	8	28
5307-01-016-4423	2	16	5365-01-100-7392	8	6
5340-01-030-6854	3	6	5330-01-101-7264	10	14
2815-01-068-3790	17	4	5330-01-101-8063	10	10
2990-01-068-8217	11	6	5330-01-101-8076	8	10
5305-01-069-8897	14	2	5120-01-102-1670	25	9
5330-01-069-9313	20	12	5310-01-147-3984	6	1
5330-01-069-9314	23	27	5330-01-148-0218	6	6
5330-01-070-1123	16	13	4930-01-220-2605	2	
5307-01-070-2148	23	7	5330-01-246-7353	23	15
5365-01-070-2325	17	5	5310-01-264-6201	6	2
5330-01-070-4832	19	6	5305-01-264-6222	8	1
5307-01-070-6470	23	8	5340-01-264-6223	8	2
5330-01-070-6701	21	13	5365-01-264-6224	8	3
5330-01-070-7136	23	4	4330-01-264-6225	8	4
5307-01-070-9174	16	25	5305-01-264-6226	8	5
5307-01-071-1326	16	26	5305-01-264-6227	8	7
5307-01-071-1327	23	29	5340-01-264-6228	8	13
4730-01-071-4075	2	1	5310-01-264-6229	8	18
5310-01-073-9220	13	3	5310-01-264-6230	8	20
5310-01-074-1498	13	8	4330-01-264-6231	9	3
	15	5	5305-01-264-6232	9	4

CROSS-REFERENCE INDEXES

NATIONAL STOCK NUMBER INDEX

STOCK NUMBER	FIG.	ITEM	STOCK NUMBER	FIG.	ITEM
2990-01-264-6233	9	5	5120-01-265-1810	25	19
5310-01-264-6234	10	3	5120-01-265-1811	25	20
2910-01-264-6235	10	5	5120-01-265-1812	25	21
5310-01-264-6236	11	5	5120-01-265-1813	25	22
5305-01-264-6237	12	1	5120-01-265-1814	25	23
2910-01-264-6238	12	7	5120-01-265-1815	25	26
5310-01-264-6239	12	8	5120-01-265-1816	25	27
2990-01-264-6240	12	12	5120-01-265-1817	25	28
5310-01-264-6241	13	6	5120-01-265-1818	25	29
5310-01-264-6242	13	7	5120-01-265-1819	25	30
5305-01-264-6243	13	11	5120-01-265-1820	25	31
5305-01-264-6244	13	12	5120-01-265-1918	25	7
5310-01-264-6245	13	13	5330-01-265-1925	15	35
5310-01-264-6246	13	15	5330-01-265-1926	16	18
5305-01-264-6247	13	16	5330-01-265-1927	23	2
5310-01-264-6248	14	6	5110-01-265-1934	25	14
5305-01-264-6249	15	1	3120-01-265-1945	19	5
5305-01-264-6250	23	3	5120-01-265-1966	25	2
5365-01-264-6251	23	20	5120-01-265-1967	25	17
2815-01-264-6275	7	6	5120-01-265-1968	25	24
5330-01-264-6284	9	1	5120-01-265-1969	25	25
5330-01-264-6285	9	2	5120-01-265-1971	25	3
5330-01-264-6286	9	6	5120-01-265-2015	25	16
5330-01-264-6287	11	7	4940-01-266-0711	25	12
5330-01-264-6288	12	3	4940-01-266-0712	25	13
5330-01-264-6289	15	8	5330-01-267-2307	12	6
5330-01-264-6290	15	28	5307-01-267-2308	8	29
4820-01-264-6294	10	8	2815-01-267-2310	8	26
5365-01-264-6331	10	16			
5365-01-264-6332	10	16			
2910-01-264-6337	8	30			
6680-01-264-6338	23	1			
2910-01-264-6339	10	2			
4710-01-264-6340	10	1			
2940-01-264-6347	6	4			
2940-01-264-6353	4	1			
5340-01-265-1751	13	14			
2815-01-265-1752	15	9			
2815-01-265-1753	16	1			
2815-01-265-1754	17	1			
5315-01-265-1755	21	1			
5330-01-265-1756	23	21			
5210-01-265-1802	25	1			
5120-01-265-1803	25	4			
5210-01-265-1804	25	5			
5120-01-265-1805	25	8			
5120-01-265-1806	25	10			
5120-01-265-1807	25	11			
5110-01-265-1808	25	15			
5120-01-265-1809	25	18			

CROSS-REFERENCE INDEXES

FSCM	PART NUMBER INDEX PART NUMBER	STOCK NUMBER	FIG.	ITEM
61080	E673LHK-216	2815-01-264-6275	7	6
96906	MS122083	5340-00-331-4774	24	8
96906	MS122121	5340-01-030-6854	3	6
96906	MS122122	5340-00-290-4521	3	4
96906	MS122125	5340-00-290-4504	3	5
96906	MS27183-18	5310-00-809-5998	2	13
96906	MS29513-253		2	24
96906	MS29513-273	5330-00-263-8015	2	15
96906	MS35198-70	5305-00-206-3689	2	22
96906	MS35206-264	5305-00-984-6211	1	5
			1	11
96906	MS35214-69	5305-00-637-1119	2	7
96906	MS35338-43	5310-00-045-3296	1	4
			1	10
96906	MS35338-46	5310-00-637-9541	7	2
			24	2
96906	MS35649-202	5310-00-934-9758	1	3
			1	9
96906	MS35756-34	5315-00-043-1787	2	27
96906	MS51864-103-18	5307-01-013-7888	2	11
96906	MS51864-106-20	5307-01-016-4423	2	16
96906	MS51884-15	4730-01-071-4075	2	1
96906	MS51887-7C	4730-01-100-0109	3	1
96906	MS51967-8	5310-00-732-0558	7	1
96906	MS51968-14	5310-00-732-0560	2	12
96906	MS51968-5	5310-00-880-7746	2	4
96906	MS63040-7		24	3
96906	MS90725-60	5305-00-269-3211	7	4
96906	MS90726-43	5306-00-225-9098	2	17
96906	MS90728-64	5305-00-725-2317	7	3
96906	MS90728-65	5305-00-821-3869	24	1
18265	RBX00-2250	2940-01-264-6353	4	1
61080	003 087 04		20	17
61080	003 088 02	6680-01-264-6338	23	1
61080	003 137 01		12	2
61080	003 138 02		15	6
61080	003 150 00	2990-01-264-6240	12	12
61080	003 612 02		22	11
61080	003 613 00		18	1
61080	003 618 01	2815-01-265-1752	15	9
61080	003 620 04		15	7
61080	003 623 10		19	4
61080	003 624 00		23	9
61080	004 106 11		12	4
61080	004 273 03		20	10
61080	005 630 01		21	12
61080	006 142 01		15	21
61080	006 143 01		15	23
61080	006 350 00		21	9
61080	006 710 01	4820-01-264-6294	10	8
61080	006 913 00		8	27

CROSS-REFERENCE INDEXES

FSCM	PART NUMBER INDEX		STOCK NUMBER	FIG.	ITEM
	PART NUMBER				
61080	007	204 00		13	18
61080	007	363 00 P1		15	10
61080	007	401 21		16	21
61080	007	420 00		22	3
61080	007	468 00		16	15
61080	007	852 00		11	3
61080	008	649 00	2990-01-068-8217	11	6
61080	009	026 00		15	31
61080	009	041 00		17	3
61080	009	043 00	2815-01-068-3790	17	4
61080	009	076 01	2815-01-265-1753	16	1
61080	009	127 00	2815-01-265-1754	17	1
61080	009	128 00		23	28
05748	01628			1	1
				1	7
61080	030	037 00		15	17
61080	030	045 01		22	2
61080	030	066 02		22	6
61080	030	220 01		15	18
61080	030	597 00		20	1
61080	030	600 02		15	19
61080	030	604 03		23	16
61080	030	605 01		16	3
61080	030	609 01		22	14
61080	030	611 00		16	10
61080	030	615 01		15	14
61080	030	626 00		10	17
61080	030	632 01		21	6
61080	030	633 01		20	3
61080	030	634 01		20	2
61080	030	638 00		16	12
61080	030	639 01		15	30
61080	030	640 00		10	18
61080	030	648 01		22	1
61080	030	664 01		14	9
61080	030	665 01		14	8
61080	030	666 01		14	4
61080	030	690 04 P1	5305-01-264-6250	23	3
61080	030	925 00		15	15
61080	031	049 01		23	14
61080	031	056 00	5310-01-073-9220	13	3
61080	031	121 01	5310-01-264-6246	13	15
61080	031	122 00	5340-01-265-1751	13	14
61080	031	124 10		12	11
61080	031	462 00		20	9
61080	031	509 00		14	1
61080	031	592 00		15	3
61080	031	655 00	5340-01-264-6223	8	2
61080	031	691 03 W1	5365-01-264-6251	23	20
61080	031	693 00		23	19
61080	031	698 00		20	4

CROSS-REFERENCE INDEXES

FSCM	PART NUMBER INDEX PART NUMBER	STOCK NUMBER	FIG.	ITEM
61080	031 700 01		22	4
61080	031 719 10		16	2
61080	031 731 00		15	16
61080	031 734 01		16	17
61080	031 851 00		15	33
61080	031 950 00		22	12
61080	032 056 02		23	26
61080	032 058 00		23	12
61080	032 059 01		21	11
61080	032 060 00		20	7
61080	032 061 00		20	8
61080	032 062 00		23	25
61080	032 066 00		22	7
61080	032 067 00	3120-01-080-3018	18	4
61080	032 069 00	3120-01-080-3017	18	2
61080	032 076 00	5307-01-070-6470	23	8
61080	032 077 01	5307-01-070-2148	23	7
61080	032 080 01		16	6
61080	032 081 00		16	4
61080	032 082 10		16	22
61080	032 084 00		16	5
61080	032 089 02 W3	5330-01-264-6289	15	8
61080	032 090 02		15	32
61080	032 091 01		15	34
61080	032 092 02	5330-01-074-1504	19	9
61080	032 093 00		19	13
61080	032 095 00	5330-01-082-6176	10	16
61080	032 096 00	5330-01-078-4508	10	16
61080	032 097 00	5365-01-264-6331	10	16
61080	032 098 00	5365-01-264-6332	10	16
61080	032 100 00	5330-01-264-6288	12	3
61080	032 620 00		12	5
61080	032 780 00		19	11
61080	032 929 00	5365-01-100-7392	8	6
05748	03245		4	2
61080	033 937 00		18	3
61080	034 057 00	4710-01-264-6340	10	1
61080	034 300 00		19	14
61080	034 301 00		15	22
61080	034 301 01		15	24
61080	034 442 00		20	18
61080	034 473 00	2910-01-079-8052	16	24
61080	034 578 00		14	7
61080	034 772 00 W1	5330-01-264-6290	15	28
61080	034 850 00		10	6
			10	6
61080	034 929 00		14	10
61080	034 930 00		8	24
61080	034 931 00		8	12
61080	034 933 00		8	16
61080	034 936 00		8	15

CROSS-REFERENCE INDEXES

FSCM	PART NUMBER INDEX		FIG.	ITEM
	PART NUMBER	STOCK NUMBER		
61080	035 110 00		13	5
61080	035 115 00		13	9
61080	035 116 00		13	10
61080	035 117 00	5305-01-264-6243	13	11
61080	035 119 00		13	2
61080	035 206 00	5365-01-264-6224	8	3
61080	035 256 00		8	8
61080	035 258 00		8	25
61080	035 698 20		16	8
61080	035 706 00		16	20
61080	035 818 00	5330-01-074-2105	15	29
61080	035 819 00	5330-01-074-2106	15	29
61080	035 820 00	5330-01-074-2107	15	29
61080	035 821 00	5330-01-074-1503	15	29
61080	035 822 00	5330-01-074-2108	15	29
61080	035 833 00		17	2
61080	036 124 00		19	7
61080	036 396 00		23	23
61080	036 742 00		8	14
61080	036 997 00		11	4
61080	037 538 00		16	7
61080	037 663 00	5310-01-264-6248	14	6
			15	13
61080	038 926 00		15	27
61080	039 071 00		21	3
05748	05805		5	1
00736	1DM-007	2940-01-264-6347	6	4
00736	1NB-001		6	3
00736	12B-006	5330-01-148-0218	6	6
00736	12PGJW/STEM		6	5
97403	13200E8802		2	18
97403	13200E8803		3	3
97403	13200E8804		2	26
97403	13200E8806		2	25
97403	13200E8807-1	5365-00-712-5972	2	20
97403	13200E8807-2	5310-00-712-7731	2	21
97403	13200E8808		2	19
97403	13200E8809		2	14
97403	13200E8810	4820-00-991-6517	2	6
97403	13200E8811		2	8
97403	13200E8812		2	10
97403	13200E8813		2	9
97403	13200E8814		2	5
97403	13200E8815		2	23
79403	13200E8819		24	4
97403	13200E8861		2	28
97403	13218E0468-227		3	2
97403	13218E0479-37	4730-00-277-6845	2	3
97403	13219E2950		1	6
05748	15000	4730-01-004-5105	2	2
00736	204-302		5	2

CROSS-REFERENCE INDEXES

FSCM	PART NUMBER INDEX PART NUMBER	STOCK NUMBER	FIG.	ITEM
00736	204302-800		6	7
00736	20515	5310-01-147-3984	6	1
00736	22852	5310-01-264-6201	6	2
05748	29282SA		2	29
05748	29593		3	7
61080	400 013 00	5310-01-264-6239	12	8
61080	400 025 00		23	22
61080	400 031 00	5310-01-264-6234	10	3
61080	400 066 00	2910-01-264-6339	10	2
61080	400 190 00	2910-01-264-6238	12	7
61080	400 217 00	5330-01-246-7353	23	15
61080	400 220 00	5330-01-265-1927	23	2
61080	400 223 00	5330-01-069-9313	20	12
61080	400 228 00	5330-01-100-0638	23	10
61080	400 238 00	5330-01-069-9314	23	27
61080	400 278 00		21	8
61080	400 282 00	5310-01-080-0033	14	3
61080	400 283 00	5310-01-100-5204	8	28
61080	400 284 00		8	23
61080	400 326 11	2815-01-267-2310	8	26
61080	400 329 00	3120-01-265-1945	19	5
61080	400 337 00	5330-01-070-4832	19	6
61080	400 342 00	5330-01-070-6701	21	13
61080	400 356 00		21	7
61080	400 368 00		20	5
61080	400 373 00	5340-01-264-6228	8	13
61080	400 379 00		19	10
61080	400 397 01		23	17
61080	400 802 01	2910-01-264-6235	10	5
61080	400 816 00	5310-01-264-6236	11	5
61080	400 894 01	4330-01-264-6225	8	4
61080	400 933 00		8	19
61080	490 031 00		10	9
61080	490 037 00		10	13
61080	490 039 00		10	12
61080	490 043 00		10	11
61080	490 044 00	5330-01-101-7264	10	14
61080	490 047 00	5330-01-101-8063	10	10
61080	490 181 00	5305-01-264-6232	9	4
61080	490 182 00	2990-01-264-6233	9	5
61080	490 183 00	4330-01-264-6231	9	3
61080	490 184 00	5330-01-264-6285	9	2
61080	490 185 00	5330-01-264-6284	9	1
61080	490 369 00		10	15
61080	500 010 00	5330-01-074-2109	15	2
			19	3
61080	500 011 00	5330-01-080-1776	10	7
			15	12
61080	500 012 00	5330-01-101-8076	8	10
61080	500 015 00 W7	5330-01-265-1756	23	21
61080	500 029 00		21	5

CROSS-REFERENCE INDEXES

FSCM	PART NUMBER INDEX		FIG.	ITEM
	PART NUMBER	STOCK NUMBER		
61080	500 029 00	5310-01-080-4999	23	6
61080	500 032 00		12	10
61080	500 035 00	5310-01-074-1498	13	8
			15	5
61080	500 036 00		20	11
61080	500 042 00		20	13
61080	500 064 00		8	9
61080	500 100 00		22	5
61080	500 111 00		22	10
61080	500 117 00	5315-01-265-1755	21	1
61080	500 129 00		19	8
61080	500 159 00		8	11
61080	500 165 00	5310-01-264-6245	13	13
61080	500 167 00	5310-01-079-9886	13	17
61080	500 168 00		11	2
61080	500 206 00	5365-01-070-2325	17	5
61080	500 227 00	5310-01-081-0142	13	1
			15	20
			16	23
			20	14
61080	500 229 00	5310-01-080-0025	10	4
			23	13
61080	500 230 00	5310-01-080-4986	15	26
61080	500 232 00	5310-01-264-6241	13	6
61080	500 234 00	5310-01-080-4987	14	5
			15	4
61080	500 235 00		20	6
61080	500 238 00		16	9
61080	500 245 00		12	9
61080	500 246 00		23	11
61080	500 251 00	5305-01-264-6244	13	12
61080	500 255 00		21	10
61080	500 292 00		19	2
		5306-01-074-6815	23	5
61080	500 341 00		16	19
61080	500 343 00		20	16
61080	500 346 00		16	16
61080	500 349 00		20	15
61080	500 357 00		16	14
61080	500 362 00		22	9
61080	500 372 00	5307-01-071-1326	16	26
61080	500 373 00	5307-01-071-1327	23	29
61080	500 426 00		16	11
61080	500 437 00		15	25
61080	500 477 00		22	8
61080	500 501 00	5305-01-069-8897	14	2
61080	500 504 00		23	24
61080	500 513 00	5305-01-264-6249	15	1
61080	500 518 00		22	13
61080	500 520 00	5305-01-264-6247	13	16
61080	500 527 00	5305-01-264-6222	8	1

CROSS-REFERENCE INDEXES

FSCM	PART NUMBER PART NUMBER	INDEX STOCK NUMBER	FIG.	ITEM
61080	500 534 00	5305-01-264-6237	12	1
61080	500 538 00		19	1
			21	2
61080	500 545 00		21	4
61080	500 621 00		23	18
61080	500 622 00		19	12
61080	500 624 00	5310-01-264-6229	8	18
61080	500 629 00	5310-01-264-6242	13	7
61080	501 075 00		17	6
61080	501 110 00	5307-01-070-9174	16	25
61080	501 224 00	5330-01-264-6287	11	7
61080	501 299 00	5330-01-264-6286	9	6
61080	501 333 00		13	4
61080	501 339 00	5305-01-264-6227	8	7
61080	501 443 00	5307-01-267-2308	8	29
61080	501 538 00	5330-01-070-7136	23	4
61080	501 540 00	5330-01-079-9960	21	14
61080	501 541 00	5330-01-077-3913	15	11
61080	501 542 00	5330-01-070-1123	16	13
61080	501 543 00	5330-01-265-1926	16	18
61080	501 583 00	5310-01-264-6230	8	20
61080	501 697 00		8	17
61080	501 715 00		8	21
61080	501 716 00		8	22
61080	501 731 00	5305-01-264-6226	8	5
			11	1
61080	501 814 00	2910-01-264-6337	8	30
61080	502 524 00	5330-01-267-2307	12	6
61080	502 580 00	5330-01-265-1925	15	35
05748	51454		1	2
61080	603 114 00	5210-01-265-1802	25	1
61080	603 823 00	5120-01-265-1966	25	2
61080	604 581 00	5120-01-265-1803	25	4
61080	604 628 00	5210-01-265-1804	25	5
61080	612 087 00		25	6
61080	612 090 00	5120-01-265-1805	25	8
61080	612 091 00	5120-01-102-1670	25	9
61080	612 095 00	5120-01-265-1806	25	10
61080	612 099 00	5120-01-265-1807	25	11
61080	612 103 00	4940-01-266-0711	25	12
61080	612 104 00	4940-01-266-0712	25	13
61080	612 107 00	5110-01-265-1934	25	14
61080	612 752 00	5110-01-265-1808	25	15
61080	614 957 00	5120-01-265-2015	25	16
61080	618 168 00	5120-01-265-1967	25	17
61080	618 305 00	5120-01-265-1809	25	18
61080	618 306 00	5120-01-265-1971	25	3
61080	666 067 00	5120-01-265-1810	25	19
61080	666 068 00	5120-01-265-1811	25	20
61080	666 069 00	5120-01-265-1812	25	21
61080	666 074 00	5120-01-265-1813	25	22

CROSS-REFERENCE INDEXES

FSCM	PART NUMBER INDEX		FIG.	ITEM
	PART NUMBER	STOCK NUMBER		
61080	666 075 00	5120-01-265-1814	25	23
61080	666 324 00	5120-01-265-1968	25	24
61080	666 327 01	5120-01-265-1969	25	25
61080	666 346 00	5120-01-265-1815	25	26
61080	666 418 00	5120-01-265-1816	25	27
61080	666 425 00	5120-01-265-1817	25	28
61080	668 335 00	5120-01-265-1918	25	7
61080	668 383 00	5120-01-265-1818	25	29
61080	669 347 00	5120-01-265-1819	25	30
61080	670 323 00	5120-01-265-1820	25	31
05748	70895SA		1	13
05748	72026SA		24	6
05748	72027SA		24	5
05748	72028		7	5
05748	76789SA		4	3
05748	77831SA		24	7
05748	77939		1	8
05748	77940		1	12
05748	78678S/A	4930-01-220-2605	2	
87373	801-4	4720-01-061-5935	BULK	1

CROSS-REFERENCE INDEXES

FIG.	FIGURE AND ITEM	NUMBER INDEX STOCK NUMBER	FSCM	PART NUMBER
BULK	1	4720-01-061-5935	87373	801-4
1	1		05748	01628
1	2		05748	51454
1	3	5310-00-934-9758	96906	MS35649-202
1	4	5310-00-045-3296	96906	MS35338-43
1	5	5305-00-984-6211	96906	MS35206-264
1	6		97403	13219E2950
1	7		05748	01628
1	8		05748	77939
1	9	5310-00-934-9758	96906	MS35649-202
1	10	5310-00-045-3296	96906	MS35338-43
1	11	5305-00-984-6211	96906	MS35206-264
1	12		05748	77940
1	13		05748	70895SA
2		4930-01-220-2605	05748	78678S/A
2	1	4730-01-071-4075	96906	MS51884-15
2	2	4730-01-004-5105	05748	15000
2	3	4730-00-277-6845	97403	13218E0479-37
2	4	5310-00-880-7746	96906	MS51968-5
2	5		97403	13200E8814
2	6	4820-00-991-6517	97403	13200E8810
2	7	5305-00-637-1119	96906	MS35214-69
2	8		97403	13200E8811
2	9		97403	13200E8813
2	10		97403	13200E8812
2	11	5307-01-013-7888	96906	MS51864-103-18
2	12	5310-00-732-0560	96906	MS51968-14
2	13	5310-00-809-5998	96906	MS27183-18
2	14		97403	13200E8809
2	15	5330-00-263-8015	96906	MS29513-273
2	16	5307-01-016-4423	96906	MS51864-106-20
2	17	5306-00-225-9098	96906	MS90726-43
2	18		97403	13200E8802
2	19		97403	13200E8808
2	20	5365-00-712-5972	97403	13200E8807-1
2	21	5310-00-712-7731	97403	13200E8807-2
2	22	5305-00-206-3689	96906	MS35198-70
2	23		97403	13200E8815
2	24		96906	MS29513-253
2	25		97403	13200E8806
2	26		97403	13200E8804
2	27	5315-00-043-1787	96906	MS35756-34
2	28		97403	13200E8861
2	29		05748	29282SA
3	1	4730-01-100-0109	96906	MS51887-7C
3	2		97403	13218E0468-227
3	3		97403	13200E8803
3	4	5340-00-290-4521	96906	MS122122
3	5	5340-00-290-4504	96906	MS122125
3	6	5340-01-030-6854	96906	MS122121
3	7		05748	29593

CROSS-REFERENCE INDEXES

FIG.	FIGURE AND ITEM	INDEX STOCK NUMBER	FSCM	PART NUMBER
4	1	2940-01-264-6353	18265	RBX00-2250
4	2		05748	03245
4	3		05748	76789SA
5	1		05748	05805
5	2		00736	204-302
6	1	5310-01-147-3984	00736	20515
6	2	5310-01-264-6201	00736	22852
6	3		00736	1NB-001
6	4	2940-01-264-6347	00736	1DM-007
6	5		00736	12PGJW/STEM
6	6	5330-01-148-0218	00736	12B-006
6	7		00736	204302-800
7	1	5310-00-732-0558	96906	MS51967-8
7	2	5310-00-637-9541	96906	MS35338-46
7	3	5305-00-725-2317	96906	MS90728-64
7	4	5305-00-269-3211	96906	MS90725-60
7	5		05748	72028
7	6	2815-01-264-6275	61080	E673LHK-216
8	1	5305-01-264-6222	61080	500 527 00
8	2	5340-01-264-6223	61080	031 655 00
8	3	5365-01-264-6224	61080	035 206 00
8	4	4330-01-264-6225	61080	400 894 01
8	5	5305-01-264-6226	61080	501 731 00
8	6	5365-01-100-7392	61080	032 929 00
8	7	5305-01-264-6227	61080	501 339 00
8	8		61080	035 256 00
8	9		61080	500 064 00
8	10	5330-01-101-8076	61080	500 012 00
8	11		61080	500 159 00
8	12		61080	034 931 00
8	13	5340-01-264-6228	61080	400 373 00
8	14		61080	036 742 00
8	15		61080	034 936 00
8	16		61080	034 933 00
8	17		61080	501 697 00
8	18	5310-01-264-6229	61080	500 624 00
8	19		61080	400 933 00
8	20	5310-01-264-6230	61080	501 583 00
8	21		61080	501 715 00
8	22		61080	501 716 00
8	23		61080	400 284 00
8	24		61080	034 930 00
8	25		61080	035 258 00
8	26	2815-01-267-2310	61080	400 326 11
8	27		61080	006 913 00
8	28	5310-01-100-5204	61080	400 283 00
8	29	5307-01-267-2308	61080	501 443 00
8	30	2910-01-264-6337	61080	501 814 00
9	1	5330-01-264-6284	61080	490 185 00
9	2	5330-01-264-6285	61080	490 184 00
9	3	4330-01-264-6231	61080	490 183 00

CROSS-REFERENCE INDEXES

FIG.	FIGURE AND ITEM	ITEM NUMBER STOCK NUMBER	INDEX	FSCM	PART NUMBER
9	4	5305-01-264-6232		61080	490 181 00
9	5	2990-01-264-6233		61080	490 182 00
9	6	5330-01-264-6286		61080	501 299 00
10	1	4710-01-264-6340		61080	034 057 00
10	2	2910-01-264-6339		61080	400 066 00
10	3	5310-01-264-6234		61080	400 031 00
10	4	5310-01-080-0025		61080	500 229 00
10	5	2910-01-264-6235		61080	400 802 01
10	6			61080	034 850 00
10	6			61080	034 850 00
10	7	5330-01-080-1776		61080	500 011 00
10	8	4820-01-264-6294		61080	006 710 01
10	9			61080	490 031 00
10	10	5330-01-101-8063		61080	490 047 00
10	11			61080	490 043 00
10	12			61080	490 039 00
10	13			61080	490 037 00
10	14	5330-01-101-7264		61080	490 044 00
10	15			61080	490 369 00
10	16	5330-01-078-4508		61080	032 096 00
10	16	5330-01-082-6176		61080	032 095 00
10	16	5365-01-264-6331		61080	032 097 00
10	16	5365-01-264-6332		61080	032 098 00
10	17			61080	030 626 00
10	18			61080	030 640 00
11	1			61080	501 731 00
11	2			61080	500 168 00
11	3			61080	007 852 00
11	4			61080	036 997 00
11	5	5310-01-264-6236		61080	400 816 00
11	6	2990-01-068-8217		61080	008 649 00
11	7	5330-01-264-6287		61080	501 224 00
12	1	5305-01-264-6237		61080	500 534 00
12	2			61080	003 137 01
12	3	5330-01-264-6288		61080	032 100 00
12	4			61080	004 106 11
12	5			61080	032 620 00
12	6	5330-01-267-2307		61080	502 524 00
12	7	2910-01-264-6238		61080	400 190 00
12	8	5310-01-264-6239		61080	400 013 00
12	9			61080	500 245 00
12	10			61080	500 032 00
12	11			61080	031 124 10
12	12	2990-01-264-6240		61080	003 150 00
13	1	5310-01-081-0142		61080	500 227 00
13	2			61080	035 119 00
13	3	5310-01-073-9220		61080	031 056 00
13	4			61080	501 333 00
13	5			61080	035 110 00
13	6	5310-01-264-6241		61080	500 232 00
13	7	5310-01-264-6242		61080	500 629 00

CROSS-REFERENCE INDEXES

FIG.	FIGURE AND ITEM	INDEX STOCK NUMBER	FSCM	PART NUMBER
13	8	5310-01-074-1498	61080	500 035 00
13	9		61080	035 115 00
13	10		61080	035 116 00
13	11	5305-01-264-6243	61080	035 117 00
13	12	5305-01-264-6244	61080	500 251 00
13	13	5310-01-264-6245	61080	500 165 00
13	14	5340-01-265-1751	61080	031 122 00
13	15	5310-01-264-6246	61080	031 121 01
13	16	5305-01-264-6247	61080	500 520 00
13	17	5310-01-079-9886	61080	500 167 00
13	18		61080	007 204 00
14	1		61080	031 509 00
14	2	5305-01-069-8897	61080	500 501 00
14	3	5310-01-080-0033	61080	400 282 00
14	4		61080	030 666 01
14	5	5310-01-080-4987	61080	500 234 00
14	6	5310-01-264-6248	61080	037 663 00
14	7		61080	034 578 00
14	8		61080	030 665 01
14	9		61080	030 664 01
14	10		61080	034 929 00
15	1	5305-01-264-6249	61080	500 513 00
15	2	5330-01-074-2109	61080	500 010 00
15	3		61080	031 592 00
15	4	5310-01-080-4987	61080	500 234 00
15	5	5310-01-074-1498	61080	500 035 00
15	6		61080	003 138 02
15	7		61080	003 620 04
15	8	5330-01-264-6289	61080	032 089 02 W3
15	9	2815-01-265-1752	61080	003 618 01
15	10		61080	007 363 00 P1
15	11	5330-01-077-3913	61080	501 541 00
15	12	5330-01-080-1776	61080	500 011 00
15	13		61080	037 663 00
15	14		61080	030 615 01
15	15		61080	030 925 00
15	16		61080	031 731 00
15	17		61080	030 037 00
15	18		61080	030 220 01
15	19		61080	030 600 02
15	20		61080	500 227 00
15	21		61080	006 142 01
15	22		61080	034 301 00
15	23		61080	006 143 01
15	24		61080	034 301 01
15	25		61080	500 437 00
15	26	5310-01-080-4986	61080	500 230 00
15	27		61080	038 926 00
15	28	5330-01-264-6290	61080	034 772 00 W1
15	29	5330-01-074-1503	61080	035 821 00
15	29	5330-01-074-2105	61080	035 818 00

CROSS-REFERENCE INDEXES

FIG.	FIGURE AND ITEM	ITEM NUMBER INDEX STOCK NUMBER	FSCM	PART NUMBER
15	29	5330-01-074-2106	61080	035 819 00
15	29	5330-01-074-2107	61080	035 820 00
15	29	5330-01-074-2108	61080	035 822 00
15	30		61080	030 639 01
15	31		61080	009 026 00
15	32		61080	032 090 02
15	33		61080	031 851 00
15	34		61080	032 091 01
15	35	5330-01-265-1925	61080	502 580 00
16	1	2815-01-265-1753	61080	009 076 01
16	2		61080	031 719 10
16	3		61080	030 605 01
16	4		61080	032 081 00
16	5		61080	032 084 00
16	6		61080	032 080 01
16	7		61080	037 538 00
16	8		61080	035 698 20
16	9		61080	500 238 00
16	10		61080	030 611 00
16	11		61080	500 426 00
16	12		61080	030 638 00
16	13	5330-01-070-1123	61080	501 542 00
16	14		61080	500 357 00
16	15		61080	007 468 00
16	16		61080	500 346 00
16	17		61080	031 734 01
16	18	5330-01-265-1926	61080	501 543 00
16	19		61080	500 341 00
16	20		61080	035 706 00
16	21		61080	007 401 21
16	22		61080	032 082 10
16	23	5310-01-081-0142	61080	500 227 00
16	24	2910-01-079-8052	61080	034 473 00
16	25	5307-01-070-9174	61080	501 110 00
16	26	5307-01-071-1326	61080	500 372 00
17	1	2815-01-265-1754	61080	009 127 00
17	2		61080	035 833 00
17	3		61080	009 041 00
17	4	2815-01-068-3790	61080	009 043 00
17	5	5365-01-070-2325	61080	500 206 00
17	6		61080	501 075 00
18	1		61080	003 613 00
18	2	3120-01-080-3017	61080	032 069 00
18	3		61080	033 937 00
18	4	3120-01-080-3018	61080	032 067 00
19	1		61080	500 538 00
19	2		61080	500 292 00
19	3		61080	500 010 00
19	4		61080	003 623 10
19	5	3120-01-265-1945	61080	400 329 00
19	6	5330-01-070-4832	61080	400 337 00

CROSS-REFERENCE INDEXES

FIG.	FIGURE AND ITEM NUMBER INDEX ITEM	STOCK NUMBER	FSCM	PART NUMBER
19	7		61080	036 124 00
19	8		61080	500 129 00
19	9	5330-01-074-1504	61080	032 092 02
19	10		61080	400 379 00
19	11		61080	032 780 00
19	12		61080	500 622 00
19	13		61080	032 093 00
19	14		61080	034 300 00
20	1		61080	030 597 00
20	2		61080	030 634 01
20	3		61080	030 633 01
20	4		61080	031 698 00
20	5		61080	400 368 00
20	6		61080	500 235 00
20	7		61080	032 060 00
20	8		61080	032 061 00
20	9		61080	031 462 00
20	10		61080	004 273 03
20	11		61080	500 036 00
20	12	5330-01-069-9313	61080	400 223 00
20	13		61080	500 042 00
20	14		61080	500 227 00
20	15		61080	500 349 00
20	16		61080	500 343 00
20	17		61080	003 087 04
20	18		61080	034 442 00
21	1	5315-01-265-1755	61080	500 117 00
21	2		61080	500 538 00
21	3		61080	039 071 00
21	4		61080	500 545 00
21	5		61080	500 029 00
21	6		61080	030 632 01
21	7		61080	400 356 00
21	8		61080	400 278 00
21	9		61080	006 350 00
21	10		61080	500 255 00
21	11		61080	032 059 01
21	12		61080	005 630 01
21	13	5330-01-070-6701	61080	400 342 00
21	14	5330-01-079-9960	61080	501 540 00
22	1		61080	030 648 01
22	2		61080	030 045 01
22	3		61080	007 420 00
22	4		61080	031 700 01
22	5		61080	500 100 00
22	6		61080	030 066 02
22	7		61080	032 066 00
22	8		61080	500 477 00
22	9		61080	500 362 00
22	10		61080	500 111 00
22	11		61080	003 612 02

CROSS-REFERENCE INDEXES

FIG.	FIGURE AND ITEM ITEM	INDEX STOCK NUMBER	FSCM	PART NUMBER
22	12		61080	031 950 00
22	13		61080	500 518 00
22	14		61080	030 609 01
23	1	6680-01-264-6338	61080	003 088 02
23	2	5330-01-265-1927	61080	400 220 00
23	3	5305-01-264-6250	61080	030 690 04 P1
23	4	5330-01-070-7136	61080	501 538 00
23	5	5306-01-074-6815	61080	500 292 00
23	6	5310-01-080-4999	61080	500 029 00
23	7	5307-01-070-2148	61080	032 077 01
23	8	5307-01-070-6470	61080	032 076 00
23	9		61080	003 624 00
23	10	5330-01-100-0638	61080	400 228 00
23	11		61080	500 246 00
23	12		61080	032 058 00
23	13		61080	500 229 00
23	14		61080	031 049 01
23	15	5330-01-246-7353	61080	400 217 00
23	16		61080	030 604 03
23	17		61080	400 397 01
23	18		61080	500 621 00
23	19		61080	031 693 00
23	20	5365-01-264-6251	61080	031 691 03 W1
23	21	5330-01-265-1756	61080	500 015 00 W7
23	22		61080	400 025 00
23	23		61080	036 396 00
23	24		61080	500 504 00
23	25		61080	032 062 00
23	26		61080	032 056 02
23	27	5330-01-069-9314	61080	400 238 00
23	28		61080	009 128 00
23	29	5307-01-071-1327	61080	500 373 00
24	1	5305-00-821-3869	96906	MS90728-65
24	2	5310-00-637-9541	96906	MS35338-46
24	3		96906	MS63040-7
24	4		79403	13200E8819
24	5		05748	72027SA
24	6		05748	72026SA
24	7		05748	77831SA
24	8	5340-00-331-4774	96906	MS122083
25	1	5210-01-265-1802	61080	603 114 00
25	2	5120-01-265-1966	61080	603 823 00
25	3	5120-01-265-1971	61080	618 306 00
25	4	5120-01-265-1803	61080	604 581 00
25	5	5210-01-265-1804	61080	604 628 00
25	6		61080	612 087 00
25	7	5120-01-265-1918	61080	668 335 00
25	8	5120-01-265-1805	61080	612 090 00
25	9	5120-01-102-1670	61080	612 091 00
25	10	5120-01-265-1806	61080	612 095 00
25	11	5120-01-265-1807	61080	612 099 00

CROSS-REFERENCE INDEXES

FIG.	FIGURE AND ITEM	INDEX STOCK NUMBER	FSCM	PART NUMBER
25	12	4940-01-266-0711	61080	612 103 00
25	13	4940-01-266-0712	61080	612 104 00
25	14	5110-01-265-1934	61080	612 107 00
25	15	5110-01-265-1808	61080	612 752 00
25	16	5120-01-265-2015	61080	614 957 00
25	17	5120-01-265-1967	61080	618 168 00
25	18	5120-01-265-1809	61080	618 305 00
25	19	5120-01-265-1810	61080	666 067 00
25	20	5120-01-265-1811	61080	666 068 00
25	21	5120-01-265-1812	61080	666 069 00
25	22	5120-01-265-1813	61080	666 074 00
25	23	5120-01-265-1814	61080	666 075 00
25	24	5120-01-265-1968	61080	666 324 00
25	25	5120-01-265-1969	61080	666 327 01
25	26	5120-01-265-1815	61080	666 346 00
25	27	5120-01-265-1816	61080	666 418 00
25	28	5120-01-265-1817	61080	666 425 00
25	29	5120-01-265-1818	61080	668 383 00
25	30	5120-01-265-1819	61080	669 347 00
25	31	5120-01-265-1820	61080	670 323 00

TM 5-4320-304-24P
TM-08922A-24P/2

By Order of the Secretaries of the Army and Navy (including the Marine Corps).

CARL E. VUONO
General, United States Army
Chief of States

Official:

R.L. DILWORTH
Brigadier General, United States Army
The Adjutant General

J. J. WENT
Lieutenant General, USMC
Deputy Chief of Staff for Installations and Logistics

DISTRIBUTION:

To be distributed in accordance with DA Form 12-25A, Unit, Direct Support and General Support Maintenance requirements for Pump Unit, Centrifugal (A52109H).

RECOMMENDED CHANGES TO EQUIPMENT TECHNICAL PUBLICATIONS



THEN... JOT DOWN THE DOPE ABOUT IT ON THIS FORM. CAREFULLY TEAR IT OUT. FOLD IT AND DROP IT IN THE MAIL!

SOMETHING WRONG WITH THIS PUBLICATION?

FROM: (PRINT YOUR UNIT'S COMPLETE ADDRESS)

DATE SENT

PUBLICATION NUMBER

TM 5-4320-304-24P

PUBLICATION DATE

30 Nov 1987

PUBLICATION TITLE

Centrifugal Pump Unit

BE EXACT... PIN-POINT WHERE IT IS

PAGE NO	PARA-GRAPH	FIGURE NO	TABLE NO
---------	------------	-----------	----------

IN THIS SPACE TELL WHAT IS WRONG AND WHAT SHOULD BE DONE ABOUT IT:

TEAR ALONG PERFORATED LINE

PRINTED NAME, GRADE OR TITLE, AND TELEPHONE NUMBER

SIGN HERE

DA FORM 2028-2
1 JUL 79

PREVIOUS EDITIONS ARE OBSOLETE.
DRSTS-M Overprint 2, 1 Nov 80.

P.S.--IF YOUR OUTFIT WANTS TO KNOW ABOUT YOUR RECOMMENDATION MAKE A CARBON COPY OF THIS AND GIVE IT TO YOUR HEADQUARTERS

FILL IN YOUR
UNIT'S ADDRESS

FOLD BACK

DEPARTMENT OF THE ARMY

OFFICIAL BUSINESS
PENALTY FOR PRIVATE USE \$300

POSTAGE AND FEES PAID
DEPARTMENT OF THE ARMY
DOD 314



COMMANDER
U S ARMY TROOP SUPPORT COMMAND
ATTN: AMSTR-MCTS
4300 GOODFELLOW BOULEVARD
ST. LOUIS, MO 63120-1798

TEAR ALONG PERFORATED LINE

RECOMMENDED CHANGES TO EQUIPMENT TECHNICAL PUBLICATIONS



THEN... JOT DOWN THE DOPE ABOUT IT ON THIS FORM. CAREFULLY TEAR IT OUT. FOLD IT AND DROP IT IN THE MAIL!

SOMETHING WRONG WITH THIS PUBLICATION?

FROM: (PRINT YOUR UNIT'S COMPLETE ADDRESS)
PFC JOHN DOE
COA, 3d ENGINEER BN
FT. LEONARDWOOD, MD 63108
 DATE SENT

PUBLICATION NUMBER TM 5-4320-304-24P	PUBLICATION DATE 30 Nov 1987	PUBLICATION TITLE Centrifugal Pump Unit
---	---------------------------------	--

BE EXACT PIN-POINT WHERE IT IS				IN THIS SPACE TELL WHAT IS WRONG AND WHAT SHOULD BE DONE ABOUT IT:
PAGE NO	PARA-GRAPH	FIGURE NO	TABLE NO	
6	2-1 a			In line 6 of paragraph 2-1a the manual states the engine has <u>6</u> Cylinders. The engine on my set only has <u>4</u> Cylinders. Change the manual to show <u>4</u> Cylinders.
B1		4-3		Callout 16 on figure 4-3 is pointing at a <u>bolt</u> . In key to figure 4-3, item 16 is called a <u>shim</u> - Please correct one or the other.
125	line 20			I ordered a gasket, item 19 on figure B-16 by NSN 2 910-00-762-3001. I got a gasket but it doesn't fit. Supply says I got what I ordered, so the NSN is wrong. Please give me a <u>good NSN</u>

TEAR ALONG PERFORATED LINE

PRINTED NAME, GRADE OR TITLE, AND TELEPHONE NUMBER JOHN DOE, PFC (268) 317-7111	SIGN HERE JOHN DOE
---	------------------------------

FILL IN YOUR
UNIT'S ADDRESS

FOLD BACK

DEPARTMENT OF THE ARMY

OFFICIAL BUSINESS
PENALTY FOR PRIVATE USE \$300

POSTAGE AND FEES PAID
DEPARTMENT OF THE ARMY
DDO 314



COMMANDER
U S ARMY TROOP SUPPORT COMMAND
ATTN: AMSTR-MCTS
4300 GOODFELLOW BOULEVARD
ST. LOUIS, MO 63120-1798

TEAR ALONG PERFORATED LINE

RECOMMENDED CHANGES TO EQUIPMENT TECHNICAL PUBLICATIONS



THEN... JOT DOWN THE DOPE ABOUT IT ON THIS FORM. CAREFULLY TEAR IT OUT. FOLD IT AND DROP IT IN THE MAIL!

SOMETHING WRONG WITH THIS PUBLICATION?

FROM: (PRINT YOUR UNIT'S COMPLETE ADDRESS)

DATE SENT

PUBLICATION NUMBER

TM 5-4320-304-24P

PUBLICATION DATE

30 Nov 1987

PUBLICATION TITLE

Centrifugal Pump Unit

BE EXACT... PIN-POINT WHERE IT IS

PAGE NO	PARA-GRAPH	FIGURE NO	TABLE NO
---------	------------	-----------	----------

IN THIS SPACE TELL WHAT IS WRONG AND WHAT SHOULD BE DONE ABOUT IT:

TEAR ALONG PERFORATED LINE

PRINTED NAME, GRADE OR TITLE, AND TELEPHONE NUMBER

SIGN HERE

DA FORM 2028-2
1 JUL 79

PREVIOUS EDITIONS ARE OBSOLETE.
DRSTS-M Overprint 2, 1 Nov 80.

P.S.--IF YOUR OUTFIT WANTS TO KNOW ABOUT YOUR RECOMMENDATION MAKE A CARBON COPY OF THIS AND GIVE IT TO YOUR HEADQUARTERS.

FILL IN YOUR
UNIT'S ADDRESS

FOLD BACK

DEPARTMENT OF THE ARMY

OFFICIAL BUSINESS
PENALTY FOR PRIVATE USE \$300

POSTAGE AND FEES PAID
DEPARTMENT OF THE ARMY
DDO 314



COMMANDER
U S ARMY TROOP SUPPORT COMMAND
ATTN: AMSTR-MCTS
4300 GOODFELLOW BOULEVARD
ST. LOUIS, MO 63120-1798

TEAR ALONG PERFORATED LINE

RECOMMENDED CHANGES TO EQUIPMENT TECHNICAL PUBLICATIONS



THEN... JOT DOWN THE DOPE ABOUT IT ON THIS FORM. CAREFULLY TEAR IT OUT. FOLD IT AND DROP IT IN THE MAIL!

SOMETHING WRONG WITH THIS PUBLICATION?

FROM: (PRINT YOUR UNIT'S COMPLETE ADDRESS)

DATE SENT

PUBLICATION NUMBER

TM 5-4320-304-24P

PUBLICATION DATE

30 Nov 1987

PUBLICATION TITLE

Centrifugal Pump Unit

BE EXACT... PIN-POINT WHERE IT IS

PAGE NO

PARA-GRAPH

FIGURE NO

TABLE NO

IN THIS SPACE TELL WHAT IS WRONG AND WHAT SHOULD BE DONE ABOUT IT:

TEAR ALONG PERFORATED LINE

PRINTED NAME, GRADE OR TITLE, AND TELEPHONE NUMBER

SIGN HERE

DA FORM 2028-2
1 JUL 79

PREVIOUS EDITIONS ARE OBSOLETE.
DRSTS-M Overprint 2, 1 Nov 80.

P.S. --IF YOUR OUTFIT WANTS TO KNOW ABOUT YOUR RECOMMENDATION MAKE A CARBON COPY OF THIS AND GIVE IT TO YOUR HEADQUARTERS

FILL IN YOUR
UNIT'S ADDRESS

FOLD BACK

DEPARTMENT OF THE ARMY

OFFICIAL BUSINESS
PENALTY FOR PRIVATE USE \$300

POSTAGE AND FEES PAID
DEPARTMENT OF THE ARMY
DOD 314



TEAR ALONG PERFORATED LINE

COMMANDER
U S ARMY TROOP SUPPORT COMMAND
ATTN: AMSTR-MCTS
4300 GOODFELLOW BOULEVARD
ST. LOUIS, MO 63120-1798

The Metric System and Equivalents

Linear Measure

1 centimeter = 10 millimeters = .39 inch
 1 decimeter = 10 centimeters = 3.94 inches
 1 meter = 10 decimeters = 39.37 inches
 1 dekameter = 10 meters = 32.8 feet
 1 hectometer = 10 dekameters = 328.08 feet
 1 kilometer = 10 hectometers = 3,280.8 feet

Weights

1 centigram = 10 milligrams = .15 grain
 1 decigram = 10 centigrams = 1.54 grains
 1 gram = 10 decigrams = .035 ounce
 1 dekagram = 10 grams = .35 ounce
 1 hectogram = 10 dekagrams = 3.52 ounces
 1 kilogram = 10 hectograms = 2.2 pounds
 1 quintal = 100 kilograms = 220.46 pounds
 1 metric ton = 10 quintals = 1.1 short tons

Liquid Measure

1 centiliter = 10 milliliters = .34 fl. ounce
 1 deciliter = 10 centiliters = 3.38 fl. ounces
 1 liter = 10 deciliters = 33.81 fl. ounces
 1 dekaliter = 10 liters = 2.64 gallons
 1 hectoliter = 10 dekaliters = 26.42 gallons
 1 kiloliter = 10 hectoliters = 264.18 gallons

Square Measure

1 sq. centimeter = 100 sq. millimeters = .155 sq. inch
 1 sq. decimeter = 100 sq. centimeters = 15.5 sq. inches
 1 sq. meter (centare) = 100 sq. decimeters = 10.76 sq. feet
 1 sq. dekameter (are) = 100 sq. meters = 1,076.4 sq. feet
 1 sq. hectometer (hectare) = 100 sq. dekameters = 2.47 acres
 1 sq. kilometer = 100 sq. hectometers = .386 sq. mile

Cubic Measure

1 cu. centimeter = 1000 cu. millimeters = .06 cu. inch
 1 cu. decimeter = 1000 cu. centimeters = 61.02 cu. inches
 1 cu. meter = 1000 cu. decimeters = 35.31 cu. feet

Approximate Conversion Factors

To change	To	Multiply by	To change	To	Multiply by
inches	centimeters	2.540	ounce-inches	newton-meters	.007062
feet	meters	.305	centimeters	inches	.394
yards	meters	.914	meters	feet	3.280
miles	kilometers	1.609	meters	yards	1.094
square inches	square centimeters	6.451	kilometers	miles	.621
square feet	square meters	.093	square centimeters	square inches	.155
square yards	square meters	.836	square meters	square feet	10.764
square miles	square kilometers	2.590	square meters	square yards	1.196
acres	square hectometers	.405	square kilometers	square miles	.386
cubic feet	cubic meters	.028	square hectometers	acres	2.471
cubic yards	cubic meters	.765	cubic meters	cubic feet	35.315
fluid ounces	milliliters	29.573	cubic meters	cubic yards	1.308
pints	liters	.473	milliliters	fluid ounces	.034
quarts	liters	.946	liters	pints	2.113
gallons	liters	3.785	liters	quarts	1.057
ounces	grams	28.349	liters	gallons	.264
pounds	kilograms	.454	grams	ounces	.035
short tons	metric tons	.907	kilograms	pounds	2.205
pound-feet	newton-meters	1.356	metric tons	short tons	1.102
pound-inches	newton-meters	.11296			

Temperature (Exact)

°F	Fahrenheit temperature	5/9 (after subtracting 32)	Celsius temperature	°C
----	------------------------	----------------------------	---------------------	----

DEPARTMENT OF THE ARMY
US ARMY PUBLICATIONS DISTRIBUTION CENTER
1655 WOODSON ROAD
ST. LOUIS, MISSOURI 63114-6181

OFFICIAL BUSINESS

COMMANDER
USAMC MAT RCNS SPT ACTV
ATTN AMXMD-PC(LIP)
LEXINGTON KY 40511-5101

DA PUBLICATION/FORM NUMBER				CHG OR DATE	
TM 5-4320-304-24P					
LOCATION	QUANTITY	UNIT OF ISSUE	ACTION	RGN DATE	
B-11	4	INITIAL-DIST.			
PKG SIZE	ITEM NO.	BULK/RCPT DATE	SLAPDC CONTROL NO		
1692-5101			ID-9151-01715		

APDC-S FORM 4-28S (28 July 88)

PREVIOUS EDITION MAY BE USED TILL EXHAUSTED

PIN: 065245-000